



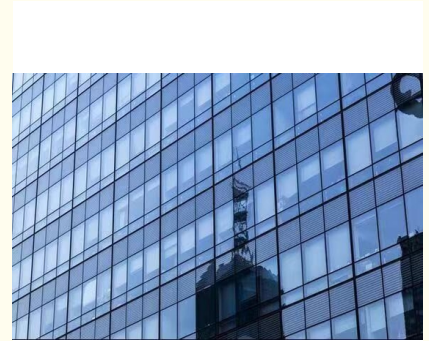
## Customizable Glass Curtain Wall with Energy Saving Thermal Insulation

### Our Product Introduction

for more products please visit us on [glass-curtainwall.com](http://glass-curtainwall.com)

#### Basic Information

- Place of Origin: China
- Brand Name: GuangdongSuperHuge
- Certification: CE,ISO
- Model Number: MQ
- Minimum Order Quantity: 100m<sup>2</sup>
- Price: 588RMB/m<sup>2</sup>
- Packaging Details: Wooden Box/Completely sealed wooden box
- Delivery Time: 20-60work days
- Payment Terms: T/T



#### Product Specification

- Protection: Thermal Insulation
- Aluminium Color: Any Color
- Panel Thickness: 1.4~5.0mm
- Patterns Selection: Customized Design Available
- Durability: Long-lasting
- Advantage: Waterproof, Soundproof, Energy Saving
- Function: Soundproof ,Adjust The Light
- Heat Insulation: Yes
- Material: Aluminum Alloy
- Column: 2.5mm-5.0mm
- Beams: 2.0mm-3.0mm
- Beams: 2.0mm-3.0mm
- Glass: Toughened Glass

## Product Description

### Product Description:

One of the most significant advantages of the Glass Curtain Wall is its waterproof feature. With this feature, you can rest assured that your building is protected from water damage, and you will not have to worry about leaks or other related problems. This feature makes it an ideal choice for buildings located in areas with high rainfall or humid climates.

In addition to being waterproof, the Glass Curtain Wall is also soundproof, reducing the amount of noise that enters the building. This feature is particularly useful in areas with high traffic or noisy surroundings, such as busy streets or airports.

The Glass Curtain Wall is also energy-saving, making it an excellent choice for environmentally conscious building owners. The glass panels used in the curtain wall are designed to help regulate the temperature inside the building, reducing the need for air conditioning and heating systems. This feature helps to save energy, lower utility bills, and reduce the building's overall carbon footprint.

The Glass Curtain Wall also functions as an adjustable light source. The glass panels allow natural light to enter the building, providing ample lighting without the need for artificial lighting during the day. The panels can also be adjusted to control the amount of light entering the building, providing a comfortable and well-lit environment for building occupants.

The Glass Curtain Wall's sleek and modern design is another standout feature. Its clean lines and minimalist style give buildings a contemporary and sophisticated look that is sure to impress. The curtain wall's design can be customized to suit any building's specific needs, making it a versatile and flexible architectural solution.

The Glass Curtain Wall's panel thickness ranges from 1.4 to 5.0mm, ensuring its durability and long-lasting performance. This thickness also provides the necessary insulation and structural support for the building, ensuring that it remains stable and secure.

Overall, the Glass Curtain Wall is an excellent choice for building owners who want to enhance their building's aesthetics while providing numerous advantages. Its waterproof, soundproof, and energy-saving features make it a practical and environmentally conscious choice, while its sleek and modern design adds a touch of sophistication to any building.

### Features:

Product Name: Glass Curtain Wall

Heat Insulation: Yes

Aluminium Color: Any Color

Aesthetics: Sleek And Modern

Advantage: Waterproof, Soundproof, Energy Saving

Durability: Long-lasting

### Technical Parameters:

Technical Parameter	Value
Product Name	Glass Curtain Wall
Patterns Selection	Customized Design Available
Aluminium Color	Any Color
Panel Thickness	1.4~5.0mm
Advantage	Waterproof, Soundproof, Energy Saving
Aesthetics	Sleek And Modern
Protection	Thermal Insulation
Function	Soundproof, Adjust The Light
Heat Insulation	Yes
Durability	Long-lasting

### Applications:

The Glass Curtain Wall is suitable for a variety of applications, including commercial and residential buildings. It is perfect for large buildings that require a lot of natural light and a stunning exterior. The product is also ideal for buildings located in noisy areas, as it is soundproof. The Glass Curtain Wall is waterproof, making it an excellent choice for buildings located in areas with heavy rainfall. Furthermore, it is energy-saving, which makes it a great investment for those looking to reduce their energy bills.

The Glass Curtain Wall is highly durable and long-lasting. It is made of high-quality materials that are designed to withstand extreme weather conditions and general wear and tear. The product is also heat-insulated, which helps to regulate the temperature inside the building. This is particularly useful for buildings located in areas with extreme temperatures.

The Glass Curtain Wall comes in a range of panel thicknesses, from 1.4 to 5.0mm. This allows for greater flexibility in design and ensures that the product can be used in a variety of settings. The aluminium color can be customized to match the building's exterior, making it a seamless addition to any design.

GuangdongSuperHuge requires a minimum order quantity of 100m<sup>2</sup>, and the price is set at 580RMB per square meter. The product is packaged in wooden boxes, and delivery time ranges from 20 to 60 workdays. Payment terms are T/T, and customers can rest assured that they are getting a high-quality product at a competitive price.

Overall, the Glass Curtain Wall by GuangdongSuperHuge is an excellent choice for those in search of a sleek and modern design. With its durability, energy-saving features, and customizable options, it is an investment that will pay off for years to come.

## Customization:

Brand Name: GuangdongSuperHuge  
Model Number: MQ  
Place of Origin: China  
Certification: CE,ISO  
Minimum Order Quantity: 100m²  
Price: 580RMB  
Packaging Details: Wooden Box  
Delivery Time: 20-60work days  
Payment Terms: T/T  
Aesthetics: Sleek And Modern  
Panel Thickness: 1.4~5.0mm  
Aluminium Color: Any Color  
Function: Soundproof ,Adjust The Light  
Heat Insulation: Yes

## Support and Services:

The Glass Curtain Wall product comes with a range of technical support and services to ensure optimal performance and customer satisfaction. Our team of experts is available to assist with:

Design and engineering consultation  
Installation guidance and supervision  
Maintenance and repair services  
Performance testing and analysis  
Customization options

Our technical support team is well-trained and experienced in all aspects of the Glass Curtain Wall product and is dedicated to providing timely and effective solutions to any issues that may arise. We are committed to providing exceptional customer service and ensuring that our customers receive the highest level of support throughout the lifecycle of their Glass Curtain Wall product.

## Packing and Shipping:

Product Packaging:

Each glass panel will be securely wrapped in foam and placed in a wooden crate for protection during transportation.

All necessary hardware and accessories will be packed separately in a box and included with the shipment.

Shipping:

The glass curtain wall product will be shipped via a freight carrier.

The shipping cost will be calculated based on the weight and destination of the shipment.

The estimated delivery time will be provided once the order is processed and shipped.

## FAQ:

**Q:** What is the brand name of the glass curtain wall product?

**A:** The brand name of the glass curtain wall product is GuangdongSuperHuge.

**Q:** What is the model number of the glass curtain wall product?

**A:** The model number of the glass curtain wall product is MQ.

**Q:** What is the place of origin of the glass curtain wall product?

**A:** The glass curtain wall product is made in China.

**Q:** What certifications does the glass curtain wall product have?

**A:** The glass curtain wall product is certified with CE and ISO.

**Q:** What is the minimum order quantity for the glass curtain wall product?

**A:** The minimum order quantity for the glass curtain wall product is 100m².

**Q:** What is the price of the glass curtain wall product?

**A:** The price of the glass curtain wall product is 580RMB.

**Q:** What are the packaging details for the glass curtain wall product?

**A:** The glass curtain wall product is packaged in a wooden box.

**Q:** What is the delivery time for the glass curtain wall product?

**A:** The delivery time for the glass curtain wall product is 20-60 work days.

**Q:** What are the payment terms for the glass curtain wall product?

**A:** The payment terms for the glass curtain wall product are T/T.



**Guangdong SuperHuge Doors and Windows Co., Ltd**



+8618819437088



jushuangmenchuang@outlook.com



glass-curtainwall.com

Shop 106, Building 5, Greenland Shangpin Garden, No. 6, East Extension Line of Fochen Road, Nanchong Community, Chencun Town, Shunde District, Foshan City, Guangdong Province