



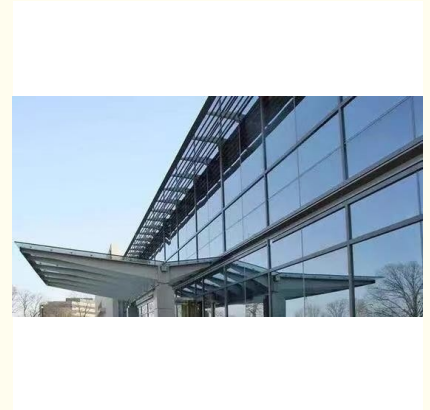
## Modern Glass Curtain Wall Aluminium Panel - Waterproof and Soundproof Design

### Our Product Introduction

for more products please visit us on [glass-curtainwall.com](http://glass-curtainwall.com)

#### Basic Information

- Place of Origin: China
- Brand Name: GuangdongSuperHuge
- Certification: CE,ISO
- Model Number: MQ
- Minimum Order Quantity: 100m<sup>2</sup>
- Price: 588RMB/m<sup>2</sup>
- Packaging Details: Wooden Box/Completely sealed wooden box
- Delivery Time: 20-60work days
- Payment Terms: T/T



#### Product Specification

- Heat Insulation: Yes
- Panel Thickness: 1.4~5.0mm
- Durability: Long-lasting
- Function: Soundproof ,Adjust The Light
- Aluminium Color: Any Color
- Aesthetics: Sleek And Modern
- Advantage: Waterproof, Soundproof, Energy Saving
- Protection: Thermal Insulation
- Material: Aluminum Alloy
- Column: 2.5mm-5.0mm
- Beams: 2.0mm-3.0mm
- Glass: Toughened Glass
- Type Of Glass: Customisation

## Product Description

### Product Description:

The Glass Curtain Wall is created using high-quality glass panels that come in a panel thickness of 1.4~5.0mm. Our panels are made with the highest standards, ensuring that they are strong and durable enough to withstand harsh weather conditions. Our panels are also designed to provide thermal insulation, helping to keep your building warm during cold seasons.

The Glass Curtain Wall is not just designed for functionality, but also aesthetics. Our product is sleek and modern, making it the perfect addition to any contemporary architectural design. Our Glass Curtain Wall is an excellent choice for architects and builders who are looking to create a modern and sophisticated look for their buildings.

Our Glass Curtain Wall comes in any color of your choice. We understand that every building has a unique style, which is why we offer a range of aluminum colors to choose from. With our Glass Curtain Wall, you can customize the color to match the unique style of your building.

Furthermore, our Glass Curtain Wall provides heat insulation, ensuring that your building stays cool during hot seasons. Our product is designed to provide maximum comfort to the occupants of your building, regardless of the weather outside.

In summary, our Glass Curtain Wall is the ideal solution for modern architectural designs. Our product provides thermal insulation, heat insulation, and comes in a sleek and modern design. With our range of aluminum colors to choose from, you can customize the color to match your building's unique style.

### Features:

Product Name: Glass Curtain Wall

Advantage: Waterproof, Soundproof, Energy Saving

Panel Thickness: 1.4~5.0mm

Function: Soundproof, Adjust The Light

Aluminium Color: Any Color

Heat Insulation: Yes

### Technical Parameters:

Product Attribute	Technical Parameters
Glass Curtain Wall	Aesthetics: Sleek And Modern
Glass Curtain Wall	Panel Thickness: 1.4~5.0mm
Glass Curtain Wall	Patterns Selection: Customized Design Available
Glass Curtain Wall	Durability: Long-lasting
Glass Curtain Wall	Aluminium Color: Any Color
Glass Curtain Wall	Protection: Thermal Insulation
Glass Curtain Wall	Heat Insulation: Yes
Glass Curtain Wall	Advantage: Waterproof, Soundproof, Energy Saving
Glass Curtain Wall	Function: Soundproof ,Adjust The Light

### Applications:

One of the primary applications of the Glass Curtain Wall is in commercial buildings such as corporate offices, shopping malls, and hotels. It provides an excellent way to showcase the building's architecture while providing a soundproof and waterproof barrier. The Glass Curtain Wall also allows natural light to enter the building while providing thermal insulation, saving energy and reducing electricity bills.

The Glass Curtain Wall is also ideal for residential buildings, especially high-rise apartments. The Glass Curtain Wall's soundproof feature ensures a quiet and peaceful environment, while its thermal insulation feature saves energy and reduces electricity bills. It also allows the residents to adjust the light entering their homes, providing a comfortable living space.

Another application for the Glass Curtain Wall is in healthcare facilities such as hospitals and clinics. The Glass Curtain Wall's waterproof and soundproof features provide a sterile and quiet environment, making it an ideal choice for critical areas such as operating rooms and emergency rooms.

The Glass Curtain Wall's versatility also makes it perfect for educational institutions such as schools and universities. It provides a sleek and modern aesthetic while allowing natural light to enter the building, making it an ideal space for learning. The Glass Curtain Wall's soundproof feature ensures a quiet and peaceful environment, providing a conducive atmosphere for learning.

Other applications for the Glass Curtain Wall include government buildings, museums, and exhibition centers. The Glass Curtain Wall's sleek and modern aesthetic provides a perfect backdrop for showcasing art and other exhibits, while its soundproof and thermal insulation features make it an ideal choice for government buildings.

The Glass Curtain Wall is available in any aluminum color, and the minimum order quantity is 100m<sup>2</sup>. The price for this product is 580RMB, with delivery time ranging from 20-60 working days. Packaging details include a wooden box, and payment terms are T/T.

Choose the Glass Curtain Wall from GuangdongSuperHuge for a sleek and modern aesthetic, waterproof and soundproof protection, and energy-saving thermal insulation.

## Customization:

Brand Name: GuangdongSuperHuge  
Model Number: MQ  
Place of Origin: China  
Certification: CE,ISO  
Minimum Order Quantity: 100m<sup>2</sup>  
Price: 580RMB  
Packaging Details: Wooden Box  
Delivery Time: 20-60 work days  
Payment Terms: T/T  
Protection: Thermal Insulation  
Heat Insulation: Yes  
Advantage: Waterproof, Soundproof, Energy Saving  
Panel Thickness: 1.4~5.0mm  
Function: Soundproof, Adjust The Light

## Support and Services:

The Glass Curtain Wall product technical support and services include:

- Consultation on product selection and application
- Assistance with design and specification
- Testing and analysis of product performance
- Installation guidelines and support
- Maintenance and repair recommendations
- Training and education on product use and care

## Packing and Shipping:

Product Packaging:

The glass panels will be securely wrapped in bubble wrap and placed in cardboard boxes.

The aluminum frames will be disassembled and placed in separate boxes.

All necessary hardware and accessories will be included in the packaging.

The boxes will be labeled with the product name and handling instructions.

Shipping:

The glass panels and aluminum frames will be shipped separately in order to ensure safe transportation.

The shipment will be delivered to the address provided by the customer.

Shipping and handling fees will be calculated based on the destination and weight of the shipment.

The customer will be provided with a tracking number to monitor the status of their shipment.

## FAQ:

Q: What is the brand name of the Glass Curtain Wall product?

A: The brand name of the product is GuangdongSuperHuge.

Q: What is the model number of the Glass Curtain Wall product?

A: The model number of the product is MQ.

Q: Where is the Glass Curtain Wall product made?

A: The product is made in China.

Q: What certification does the Glass Curtain Wall product have?

A: The product is certified with CE and ISO.

Q: What is the minimum order quantity for the Glass Curtain Wall product?

A: The minimum order quantity for the product is 100m<sup>2</sup>.

Q: What is the price of the Glass Curtain Wall product?

A: The price of the product is 580RMB.

Q: What are the packaging details for the Glass Curtain Wall product?

A: The product is packaged in a wooden box.

Q: What is the delivery time for the Glass Curtain Wall product?

A: The delivery time for the product is 20-60 work days.

Q: What are the payment terms for the Glass Curtain Wall product?

A: The payment terms for the product are T/T.



**Guangdong SuperHuge Doors and Windows Co., Ltd**



+8618819437088



jushuangmenchuang@outlook.com



glass-curtainwall.com

Shop 106, Building 5, Greenland Shangpin Garden, No. 6, East Extension Line of Fochan Road, Nanchong Community, Chencun Town, Shunde District, Foshan City, Guangdong Province