



Guangdong SuperHuge Doors and Windows Co., Ltd

glass-curtainwall.com

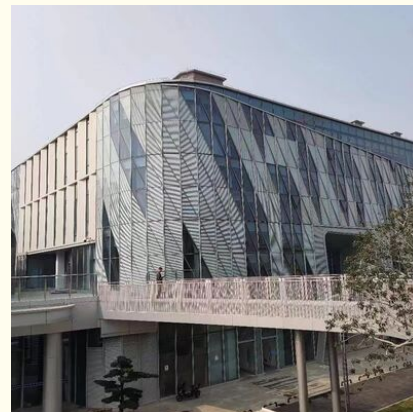
## Customizable Soundproof Glass Curtain Wall for Enhanced Privacy and Acoustic Control

Our Product Introduction

for more products please visit us on [glass-curtainwall.com](http://glass-curtainwall.com)

### Basic Information

- Place of Origin: China
- Brand Name: GuangdongSuperHuge
- Certification: CE,ISO
- Model Number: MQ
- Minimum Order Quantity: 100m<sup>2</sup>
- Price: 588RMB/m<sup>2</sup>
- Packaging Details: Wooden Box/Completely sealed wooden box
- Delivery Time: 20-60work days
- Payment Terms: T/T



### Product Specification

- Durability: Long-lasting
- Advantage: Waterproof, Soundproof, Energy Saving
- Aluminium Color: Any Color
- Heat Insulation: Yes
- Patterns Selection: Customized Design Available
- Function: Soundproof ,Adjust The Light
- Panel Thickness: 1.4~5.0mm
- Aesthetics: Sleek And Modern
- Material: Aluminum Alloy
- Column: 2.5mm-5.0mm
- Beams: 2.0mm-3.0mm
- Beams: 2.0mm-3.0mm
- Glass: Toughened Glass

## Product Description

### Product Description:

One of the key advantages of our Glass Curtain Wall is its heat insulation properties. The Glass Curtain Wall is designed to keep the interior of your building warm during the colder months and cool during the warmer months, making it an energy-saving solution for your building.

In addition to its heat insulation properties, our Glass Curtain Wall is also waterproof, ensuring that your building stays dry even during heavy rainfall. The Glass Curtain Wall is also soundproof, providing a peaceful environment for your building's occupants.

The sleek and modern design of our Glass Curtain Wall is another major advantage. The Glass Curtain Wall is designed to blend seamlessly with any building's architecture, adding to the overall aesthetic appeal of your building.

Our Glass Curtain Wall is also designed to allow you to adjust the amount of light that enters your building, providing you with greater control over the lighting conditions within your building. The Glass Curtain Wall is also available in various panel thicknesses ranging from 1.4mm to 5.0mm, allowing you to choose the perfect thickness for your building's needs.

Overall, our Glass Curtain Wall is an excellent choice for any building looking for a modern and sleek design that also provides numerous advantages such as heat insulation, waterproofing, soundproofing, energy-saving and allowing you to adjust the light.

### Features:

Product Name: Glass Curtain Wall

Aluminium Color: Any Color

Heat Insulation: Yes

Durability: Long-lasting

Function: Soundproof, Adjust The Light

Aesthetics: Sleek And Modern

### Technical Parameters:

Product Attribute	Technical Specification
Product Name	Glass Curtain Wall
Patterns Selection	Customized Design Available
Heat Insulation	Yes
Advantage	Waterproof, Soundproof, Energy Saving
Protection	Thermal Insulation
Function	Soundproof, Adjust The Light
Panel Thickness	1.4~5.0mm
Aesthetics	Sleek And Modern
Aluminium Color	Any Color
Durability	Long-lasting

### Applications:

The Glass Curtain Wall product from GuangdongSuperHuge (Model Number: MQ) is a sleek and modern solution to enhance the aesthetics of any building. Made in China and certified with CE and ISO, this product ensures durability and longevity. The minimum order quantity is 100m<sup>2</sup> and the price is 580RMB per unit. The product is packaged in wooden boxes and has a delivery time of 20-60 work days.

The Glass Curtain Wall product is thermal insulated and designed to function as a soundproof barrier. It is also adjustable to control the amount of light entering the building, making it an ideal choice for commercial and residential buildings. The product features customized design patterns, allowing flexibility for architects and designers.

The Glass Curtain Wall product is suitable for various occasions and scenarios. For commercial buildings such as office buildings, banks, and shopping malls, the product can provide a modern and stylish exterior while also providing soundproofing and thermal insulation. For residential buildings such as apartments and condominiums, the product can enhance the overall aesthetics of the building while also providing a comfortable and peaceful living environment.

The Glass Curtain Wall product is a great choice for buildings located in noisy areas such as airports, train stations, and busy streets. The soundproofing feature can significantly reduce the noise level, creating a comfortable and quiet indoor environment. The product is also ideal for buildings located in areas with extreme weather conditions as the thermal insulation feature can help regulate the indoor temperature, reducing energy consumption and costs.

Overall, the Glass Curtain Wall product from GuangdongSuperHuge is a versatile and reliable solution for enhancing the aesthetics, function, and comfort of any building. With its sleek and modern design, durability, and flexibility, it is a great investment for any building project.

### Customization:

## Support and Services:

Our Glass Curtain Wall product comes with comprehensive technical support and services to ensure a smooth installation and maintenance process. Our team of experts is available to provide advice and support throughout the entire project, from initial design to final completion.

We offer the following technical support and services:

Design and engineering assistance

Project management and coordination

Installation supervision and training

On-site technical assistance

Ongoing maintenance and repair services

Our technical support and services are designed to meet the needs of each individual project and ensure the highest level of customer satisfaction.

## Packing and Shipping:

Product Packaging:

The glass curtain wall product will be securely packaged with foam padding and cardboard boxes to prevent damage during shipping.

Each glass panel will be individually wrapped to prevent scratches and cracks.

A detailed packing list will be included with the shipment.

Shipping:

The glass curtain wall product will be shipped via freight carrier.

The delivery time will depend on the destination and shipping method selected.

The customer will be provided with a tracking number to monitor the shipment.

The shipping cost will be calculated based on the weight and destination of the product.

## FAQ:

Q: What is the brand name of this glass curtain wall product?

A: The brand name of this glass curtain wall product is GuangdongSuperHuge.

Q: What is the model number of this glass curtain wall product?

A: The model number of this glass curtain wall product is MQ.

Q: Where is this glass curtain wall product manufactured?

A: This glass curtain wall product is manufactured in China.

Q: What certifications does this glass curtain wall product have?

A: This glass curtain wall product has CE and ISO certifications.

Q: What is the minimum order quantity for this glass curtain wall product?

A: The minimum order quantity for this glass curtain wall product is 100m<sup>2</sup>.

Q: What is the price of this glass curtain wall product?

A: The price of this glass curtain wall product is 580RMB.

Q: What are the packaging details for this glass curtain wall product?

A: The packaging details for this glass curtain wall product is a wooden box.

Q: What is the delivery time for this glass curtain wall product?

A: The delivery time for this glass curtain wall product is 20-60 work days.

Q: What are the payment terms for this glass curtain wall product?

A: The payment terms for this glass curtain wall product is T/T.



**Guangdong SuperHuge Doors and Windows Co., Ltd**



+8618819437088



windowsjs8@gmail.com



glass-curtainwall.com

Shop 106, Building 5, Greenland Shangpin Garden, No. 6, East Extension Line of Focheng Road, Nanchong Community, Chencun Town, Shunde District, Foshan City, Guangdong Province