



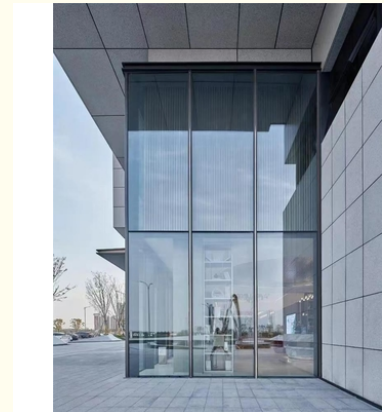
## Sleek Aluminum Frame Curtain Wall Glass Thermal Insulation

### Our Product Introduction

for more products please visit us on [glass-curtainwall.com](http://glass-curtainwall.com)

#### Basic Information

- Place of Origin: China
- Brand Name: GuangdongSuperHuge
- Certification: CE,ISO
- Model Number: MQ
- Minimum Order Quantity: 100m<sup>2</sup>
- Price: 588RMB/m<sup>2</sup>
- Packaging Details: Wooden Box/Completely sealed wooden box
- Delivery Time: 20-60work days
- Payment Terms: T/T



#### Product Specification

- Heat Insulation: Yes
- Aesthetics: Sleek And Modern
- Aluminium Color: Any Color
- Function: Soundproof ,Adjust The Light
- Protection: Thermal Insulation
- Advantage: Waterproof, Soundproof, Energy Saving
- Durability: Long-lasting
- Panel Thickness: 1.4~5.0mm
- Material: Aluminum Alloy
- Column: 2.5mm-5.0mm
- Beams: 2.0mm-3.0mm
- Glass: Toughened Glass
- Type Of Glass: Customisation

Aluminium Frame Glass Curtain Wall Sleek Design With Soundproof And Thermal Insulation

Product Description:

This Glass Curtain Wall product is perfect for those who want to add a touch of elegance and modernity to their building. It is made of high-quality glass that is designed to last for many years, making it an excellent investment for anyone looking to improve the look and functionality of their commercial or residential space.

One of the standout features of our Glass Curtain Wall product is its ability to adjust the light. It allows you to control the amount of light that enters your space, helping to create a comfortable and inviting environment.

In addition to its adjustability, our Glass Curtain Wall also provides excellent soundproofing, making it a great choice for buildings located in noisy areas. The soundproofing properties of this product are sure to provide a peaceful and tranquil environment for you and your family or employees.

The Glass Curtain Wall product also comes with a variety of patterns to choose from, making it easy to customize to your specific design preferences. Our team will work closely with you to ensure that you get the perfect design for your space, whether you are looking for something simple or intricate.

Not only does our Glass Curtain Wall product look great and provide excellent functionality, but it is also designed to provide thermal insulation. This means that it will help keep your space cool in the summer and warm in the winter, helping you save on energy costs and making your building more environmentally friendly.

The panel thickness of our Glass Curtain Wall product ranges from 1.4mm to 5.0mm, providing you with plenty of options to choose from based on your specific needs and preferences. Regardless of the thickness you choose, you can rest assured that our Glass Curtain Wall is built to last and will provide excellent durability and protection for many years to come.

In summary, if you are looking for a high-quality Glass Curtain Wall that is durable, customizable, and provides excellent soundproofing and thermal insulation, look no further than our Glass Curtain Wall product. Contact us today to learn more and to get started on your next project!

Features:

- Product Name: Glass Curtain Wall
- Panel Thickness: 1.4~5.0mm
- Aesthetics: Sleek And Modern
- Heat Insulation: Yes
- Patterns Selection: Customized Design Available
- Function: Soundproof , Adjust The Light

Technical Parameters:

Product Attribute	Technical Parameter
Glass Curtain Wall	Customized Design Available
Glass Curtain Wall	Waterproof, Soundproof, Energy Saving
Glass Curtain Wall	Sleek And Modern
Glass Curtain Wall	Soundproof, Adjust The Light
Glass Curtain Wall	1.4~5.0mm
Glass Curtain Wall	Thermal Insulation
Glass Curtain Wall	Long-lasting
Glass Curtain Wall	Yes
Glass Curtain Wall	Any Color

Applications:

The Glass Curtain Wall is suitable for long-lasting use due to its durability. The panel thickness ranges from 1.4 to 5.0mm, and the aluminium color can be customized to fit the desired aesthetic. Our product also offers a selection of customized design patterns, allowing for a unique and personalized touch.

One of the features of our Glass Curtain Wall is its thermal insulation, making it perfect for scenarios where temperature control is a necessity. It is suitable for various applications, including office buildings, hotels, shopping malls, and other commercial and residential buildings.

The Glass Curtain Wall is a popular choice for modern architecture and is often used in buildings that require a sleek and contemporary appearance. Its design allows for maximum natural light to enter the building while maintaining energy efficiency. It is also an excellent choice for buildings that require soundproofing.

The Glass Curtain Wall is a versatile product that offers a wide range of possibilities for architectural design. Its durability, thermal insulation, and customizable patterns make it the perfect choice for various occasions and scenarios. Payment terms include T/T.

## Customization:

The Glass Curtain Wall has a panel thickness of 1.4~5.0mm and is waterproof, soundproof, and energy-saving. It is a long-lasting product with the ability to adjust the light and provide soundproofing functionality. It also has heat insulation properties, making it a perfect fit for any building that requires energy efficiency.

## Support and Services:

Our Glass Curtain Wall product technical support team is available to assist with any questions or concerns you may have regarding the design, installation, and maintenance of our product. Our team has extensive knowledge and experience in the industry and is dedicated to providing top-notch customer service.

In addition to technical support, we also offer a range of services to ensure the success of your project. These services include:

Custom design and engineering

Project management

Quality control inspections

Installation supervision

Maintenance and repair

Our goal is to provide comprehensive support and services to our customers to ensure the long-term success of their projects. Contact us today to learn more about how we can assist you with your Glass Curtain Wall needs.

## Packing and Shipping:

Product Packaging:

The glass panels will be securely packed in wooden crates to prevent breakage during transportation.

All necessary hardware and accessories will be included in the package.

The crates will be labeled with the product name, quantity, and handling instructions.

Shipping:

The glass curtain wall product will be shipped via a reliable and reputable shipping company.

The shipping company will be responsible for handling and transporting the product to the destination.

The customer will be provided with a tracking number to monitor the shipment's progress.

Delivery times may vary depending on the destination and shipping method chosen.

## FAQ:

**Q1: What is the brand name of the Glass Curtain Wall product?**

A1: The brand name of the Glass Curtain Wall product is GuangdongSuperHuge.

**Q2: What is the model number of the Glass Curtain Wall product?**

A2: The model number of the Glass Curtain Wall product is MQ.

**Q3: What is the minimum order quantity for the Glass Curtain Wall product?**

A3: The minimum order quantity for the Glass Curtain Wall product is 100m<sup>2</sup>.

**Q4: What is the price of the Glass Curtain Wall product?**

A4: The price of the Glass Curtain Wall product is 580RMB.

**Q5: What are the payment terms for the Glass Curtain Wall product?**

A5: The payment terms for the Glass Curtain Wall product are T/T.



**Guangdong SuperHuge Doors and Windows Co., Ltd**



+8618819437088



jushuangmenchuang@outlook.com



glass-curtainwall.com

Shop 106, Building 5, Greenland Shangpin Garden, No. 6, East Extension Line of Focheng Road, Nanchong Community, Chencun Town, Shunde District, Foshan City, Guangdong Province