



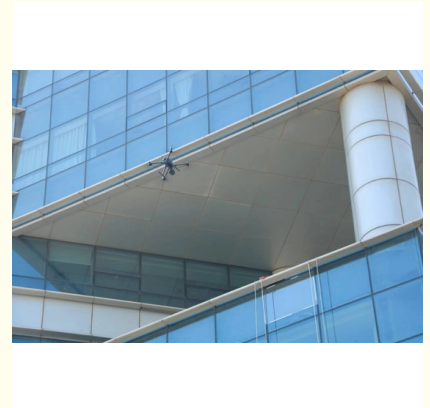
## Thermal Insulation Glass Curtain Wall Manufacturers ISO Approved

### Our Product Introduction

for more products please visit us on [glass-curtainwall.com](http://glass-curtainwall.com)

#### Basic Information

- Place of Origin: China
- Brand Name: GuangdongSuperHuge
- Certification: CE , ISO
- Model Number: MQ
- Minimum Order Quantity: 100m<sup>2</sup>
- Price: 588RMB/m<sup>2</sup>
- Packaging Details: Wooden Box/Completely sealed wooden box
- Delivery Time: 20-60work days
- Payment Terms: T/T



#### Product Specification

- Panel Thickness: 1.4~5.0mm
- Advantage: Waterproof, Soundproof, Energy Saving
- Aluminium Color: Any Color
- Protection: Thermal Insulation
- Durability: Long-lasting
- Heat Insulation: Yes
- Function: Soundproof ,Adjust The Light
- Patterns Selection: Customized Design Available
- Material: Aluminum Alloy
- Column: 2.5mm-5.0mm
- Beams: 2.0mm-3.0mm
- Glass: Toughened Glass
- Type Of Glass: Customisation

## Product Description

### Customizable Aluminium Glass Curtain Wall / Glass Curtain Wall Panels With Thermal Insulation

#### Product Description:

One of the most significant benefits of the Glass Curtain Wall is its waterproofing feature. It is designed to prevent water from penetrating the building, thereby protecting the interior from water damage. This feature is particularly useful in areas that experience heavy rainfall or high humidity levels.

Another benefit of the Glass Curtain Wall is its soundproofing capabilities. It is designed to reduce noise levels from outside, which makes it ideal for buildings situated in noisy environments such as busy streets or airports. This feature helps to create a peaceful and comfortable environment for occupants.

The Glass Curtain Wall is also an energy-saving solution. It is designed to reduce the amount of energy required to heat or cool the building, thereby lowering energy costs. This feature is particularly useful in areas with extreme weather conditions as it helps to maintain a consistent temperature inside the building.

The Glass Curtain Wall is a durable and long-lasting solution that is designed to withstand harsh weather conditions and other external factors. It is made of high-quality materials that are resistant to corrosion, rust, and other forms of damage. This makes it an excellent choice for buildings that require a long-lasting and low-maintenance solution.

The Panel Thickness of the Glass Curtain Wall ranges from 1.4mm to 5.0mm, depending on the specific requirements of the building. This feature ensures that the Glass Curtain Wall is strong enough to withstand external pressure and other forces that may damage it. The Glass Curtain Wall is also designed to provide thermal insulation, which helps to keep the building warm during the winter and cool during the summer. This feature is particularly useful in areas with extreme weather conditions, as it helps to reduce energy costs and maintain a comfortable indoor environment.

The Glass Curtain Wall also has the function of soundproofing and adjusting the light. It is designed to reduce noise levels from outside and to adjust the amount of light that enters the building, depending on the specific requirements of the occupants. This feature helps to create a comfortable and functional environment for occupants.

In conclusion, the Glass Curtain Wall is an excellent choice for buildings that require a modern and stylish finish. Its numerous advantages such as being waterproof, soundproof, and energy-saving make it an ideal solution for high-rise buildings and commercial structures. Its durability, panel thickness, and protection against thermal insulation ensure that it is a long-lasting and low-maintenance solution. Its functionality of soundproofing and adjusting the light make it a comfortable and functional solution for occupants.

#### Features:

Product Name: Glass Curtain Wall

Protection: Thermal Insulation

Function: Soundproof, Adjust The Light

Aesthetics: Sleek And Modern

Heat Insulation: Yes

Patterns Selection: Customized Design Available

#### Technical Parameters:

Product Attribute	Technical Parameters
Glass Curtain Wall	Aluminium Color: Any Color
	Panel Thickness: 1.4~5.0mm
	Function: Soundproof, Adjust The Light
	Patterns Selection: Customized Design Available
	Aesthetics: Sleek And Modern
	Protection: Thermal Insulation
	Durability: Long-lasting
	Heat Insulation: Yes
	Advantage: Waterproof, Soundproof, Energy Saving

#### Applications:

GuangdongSuperHuge's MQ Glass Curtain Wall is a versatile product that can be applied to various occasions and scenarios.

Firstly, it is ideal for commercial buildings such as offices, hotels, and shopping malls. The Glass Curtain Wall provides a sleek and modern look to the exterior of the building. It also has soundproofing capabilities, which make it suitable for office buildings and hotels where noise reduction is necessary. The Glass Curtain Wall is also waterproof, which protects the building from rainwater and other external elements.

Secondly, the Glass Curtain Wall is an excellent product for residential buildings. It can adjust the amount of light that enters the building, creating a comfortable and energy-saving living environment. It also has thermal insulation properties, which help to regulate the temperature inside the building and reduce energy consumption. The Glass Curtain Wall's soundproofing features also make it suitable for residential buildings located in noisy areas.

Thirdly, the Glass Curtain Wall is perfect for public buildings such as museums, libraries, and exhibition halls. The Glass Curtain Wall

allows natural light to enter the building, creating a bright and welcoming atmosphere. It also provides excellent sound insulation, which is essential for public buildings that host events and exhibitions. Lastly, the Glass Curtain Wall is customizable, making it suitable for various design styles and patterns. The patterns selection is available for customized designs, enabling the Glass Curtain Wall to blend seamlessly with the building's aesthetics. GuangdongSuperHuge's MQ Glass Curtain Wall has CE and ISO certification, ensuring its quality and durability. The minimum order quantity is 100m<sup>2</sup>, with a price of 580RMB. The Glass Curtain Wall is protected by a wooden box during transportation and has a delivery time of 20-60 workdays. Payment terms are T/T. Overall, the Glass Curtain Wall is an excellent product with various applications and scenarios. Its advantages of being waterproof, soundproof, and energy-saving make it an ideal choice for commercial, residential, and public buildings.

## Customization:

Customize your Glass Curtain Wall with GuangdongSuperHuge's MQ model. Made in China with CE and ISO certification, this durable and long-lasting product offers thermal insulation and soundproof protection. With a minimum order quantity of 100m<sup>2</sup> and a price of 580RMB, this Glass Curtain Wall comes packaged in a wooden box and has a delivery time of 20-60 work days. Payment terms are T/T. Adjust the light and enjoy a customized design with pattern selection. Choose any aluminum color to perfectly match your unique style.

## Support and Services:

The Glass Curtain Wall product technical support and services are designed to ensure that our customers receive the best possible assistance in the installation, maintenance, and troubleshooting of their glass curtain wall systems. Our team of experts is available to answer questions and provide guidance throughout the entire process, from initial design to post-installation upkeep.

We offer a range of services to support our customers, including:

Installation guidance and support for our products

On-site technical assistance during installation and testing

Training for installers and maintenance personnel

Maintenance and repair services to ensure optimal performance and longevity of our products

24/7 technical support and troubleshooting

Our technical support and services are backed by our commitment to quality and customer satisfaction. We strive to provide our customers with the highest level of support and assistance throughout the life of their glass curtain wall systems.

## Packing and Shipping:

Product Packaging:

Each glass panel is individually wrapped in protective materials.

All panels are then placed in a sturdy wooden crate for added protection during shipping.

The crate is then securely sealed and labeled for easy identification.

Shipping:

Shipping is handled by a trusted freight carrier.

The carrier will carefully load the crate onto their truck and transport it to the designated location.

Once the crate arrives, it should be inspected for any damages before opening.

If there are any damages, please contact us immediately for assistance.

## FAQ:

Here are some frequently asked questions about our Glass Curtain Wall:

**Q: What is the brand name of your Glass Curtain Wall?**

A: Our Glass Curtain Wall is manufactured by GuangdongSuperHuge.

**Q: What is the model number of your Glass Curtain Wall?**

A: The model number of our Glass Curtain Wall is MQ.

**Q: Where is your Glass Curtain Wall manufactured?**

A: Our Glass Curtain Wall is made in China.

**Q: Does your Glass Curtain Wall come with any certifications?**

A: Yes, our Glass Curtain Wall is CE and ISO certified.

**Q: What is the minimum order quantity for your Glass Curtain Wall?**

A: The minimum order quantity for our Glass Curtain Wall is 100m<sup>2</sup>.

**Q: What is the price of your Glass Curtain Wall?**

A: The price of our Glass Curtain Wall is 580RMB per square meter.

**Q: How is your Glass Curtain Wall packaged?**

A: Our Glass Curtain Wall is packaged in wooden boxes.

**Q: What is the delivery time for your Glass Curtain Wall?**

A: The delivery time for our Glass Curtain Wall is between 20-60 working days.

**Q: What are the payment terms for your Glass Curtain Wall?**

A: The payment terms for our Glass Curtain Wall are T/T, or wire transfer.



**Guangdong SuperHuge Doors and Windows Co., Ltd**



+8618819437088



jushuangmenchuang@outlook.com



glass-curtainwall.com

Shop 106, Building 5, Greenland Shangpin Garden, No. 6, East Extension Line of Fochen Road, Nanchong

