



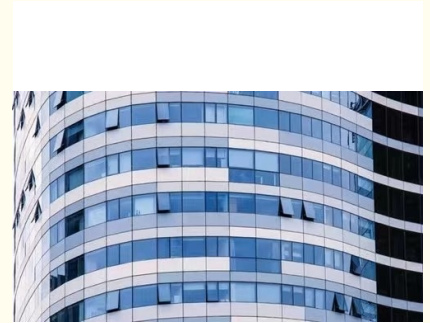
Commercial Glass Curtain Wall Systems Waterproof Soundproof Exterior Glass Wall

Our Product Introduction

for more products please visit us on glass-curtainwall.com

Basic Information

- Place of Origin: China
- Brand Name: GuangdongSuperHuge
- Certification: CE,ISO
- Model Number: MQ
- Minimum Order Quantity: 100m²
- Price: 588RMB/m²
- Packaging Details: Wooden Box/Completely sealed wooden box
- Delivery Time: 20-60work days
- Payment Terms: T/T



Product Specification

- Aluminium Color: Any Color
- Advantage: Waterproof, Soundproof, Energy Saving
- Patterns Selection: Customized Design Available
- Aesthetics: Sleek And Modern
- Protection: Thermal Insulation
- Function: Soundproof ,Adjust The Light
- Heat Insulation: Yes
- Durability: Long-lasting
- Material: Aluminum Alloy
- Column: 2.5mm-5.0mm
- Beams: 2.0mm-3.0mm
- Glass: Toughened Glass
- Type Of Glass: Customisation

Product Description

Aluminum Glass Curtain Wall Thermal Insulation With Sleek Aesthetics And Energy Saving

Product Description:

The Glass Curtain Wall is available in any aluminum color and can be customized to meet specific design requirements. The use of high-quality materials ensures that the Glass Curtain Wall is long-lasting and durable, capable of withstanding harsh weather conditions and extreme temperatures. This product is designed to provide a high level of heat insulation, reducing energy consumption and costs. It is an energy-saving solution that contributes to environmental sustainability, making it an excellent choice for modern buildings.

The Glass Curtain Wall has several advantages that make it an ideal building envelope solution. It is waterproof, ensuring that the building is protected from water infiltration and damage. It is soundproof, reducing noise pollution and providing a more comfortable indoor environment. The Glass Curtain Wall is also energy-saving, contributing to reduced energy consumption and costs. It is a versatile product that can be used in a variety of applications, from commercial to residential buildings.

Another important function of the Glass Curtain Wall is its ability to adjust the light inside the building. It provides a natural and bright atmosphere, reducing the need for artificial lighting during the day. The Glass Curtain Wall is also designed to be soundproof, reducing noise pollution and creating a more comfortable indoor environment. This product is an excellent solution for modern buildings that require a high level of functionality and aesthetics.

In conclusion, the Glass Curtain Wall is a modern and sophisticated building envelope solution that provides several advantages over traditional materials. It is available in any aluminum color and can be customized to meet specific design requirements. The Glass Curtain Wall is long-lasting and durable, capable of withstanding harsh weather conditions and extreme temperatures. It provides a high level of heat insulation, reducing energy consumption and costs. The Glass Curtain Wall is waterproof, soundproof, and energy-saving, making it an ideal building envelope solution for modern buildings. Its ability to adjust the light and reduce noise pollution makes it an excellent choice for those looking to create a comfortable and functional indoor environment.

Features:

Product Name: Glass Curtain Wall

Advantage: Waterproof, Soundproof, Energy Saving

Protection: Thermal Insulation

Patterns Selection: Customized Design Available

Function: Soundproof, Adjust The Light

Aesthetics: Sleek And Modern

Technical Parameters:

Heat Insulation	Yes
Advantage	Waterproof, Soundproof, Energy Saving
Patterns Selection	Customized Design Available
Protection	Thermal Insulation
Panel Thickness	1.4~5.0mm
Aluminium Color	Any Color
Durability	Long-lasting
Function	Soundproof ,Adjust The Light
Aesthetics	Sleek And Modern

Applications:

The MQ Glass Curtain Wall is made in China and certified with CE and ISO. It is available in any color of aluminum and has a panel thickness of 1.4~5.0mm. The minimum order quantity is 100m² at a price of 580RMB. The product is delivered in wooden boxes within 20-60 working days after payment via T/T.

The MQ Glass Curtain Wall is a popular choice for commercial buildings such as shopping malls, hotels, and office buildings. It provides a sleek and modern look and offers excellent natural lighting for the interior of the building. Its thermal insulation properties also help to reduce energy costs, making it a cost-effective solution for large commercial buildings.

In residential buildings, the MQ Glass Curtain Wall is an excellent option for homeowners who want to enjoy natural light while maintaining privacy. It also provides sound insulation, which is especially beneficial for those living in noisy areas. The product is also ideal for energy-efficient homes, as it helps to reduce heating and cooling costs.

The MQ Glass Curtain Wall is also a perfect solution for industrial buildings and factories. It provides a durable and secure barrier to protect the interior of the building from harsh weather conditions and unwanted intruders. The product is also waterproof and can withstand extreme temperatures, making it an excellent option for industrial buildings.

In summary, the GuangdongSuperHuge MQ Glass Curtain Wall is a versatile product that can be used in a variety of occasions and scenarios. Its thermal insulation, waterproof, soundproof, and energy-saving advantages make it an excellent choice for commercial, residential, and industrial buildings. With its certification, customizable aluminum color, and various panel thicknesses, it is a reliable and cost-effective solution for all your building needs.

Customization:

We offer a range of aluminum color options to choose from to match your desired aesthetic. The Glass Curtain Wall has a sleek and modern design, providing an attractive addition to any building. The product also has heat insulation capabilities, ensuring a comfortable indoor environment. In addition, it is soundproof and can be adjusted to control the amount of light entering the space. The Glass Curtain Wall also provides thermal insulation, keeping your space protected from external elements.

Support and Services:

The Glass Curtain Wall product technical support and services include:

Assistance with product installation, maintenance, and repair

Technical documentation and manuals

Product training and education

Product customization and design support

Access to replacement parts and components

Warranty and post-warranty services

Packing and Shipping:

Product Packaging:

The glass panels will be securely packed in custom-made wooden crates to prevent any damage during transportation.

All necessary hardware and accessories will be packed separately in a labeled box.

The packaging will be marked with clear labeling indicating the fragile nature of the contents.

All packages will be securely sealed to prevent any tampering or damage during transit.

Product Shipping:

The glass curtain wall product will be shipped via a reputable and reliable freight carrier.

Customers will be provided with a tracking number to monitor their shipment's progress.

The shipping process will be carefully monitored to ensure timely delivery and customer satisfaction.

Any issues or concerns during the shipping process will be promptly addressed by our customer service team.

FAQ:

Q: What is the brand name of the glass curtain wall product?

A: The brand name of the glass curtain wall product is GuangdongSuperHuge.

Q: What is the model number of the glass curtain wall product?

A: The model number of the glass curtain wall product is MQ.

Q: Where is the glass curtain wall product manufactured?

A: The glass curtain wall product is manufactured in China.

Q: What certifications does the glass curtain wall product have?

A: The glass curtain wall product has CE and ISO certifications.

Q: What is the minimum order quantity for the glass curtain wall product?

A: The minimum order quantity for the glass curtain wall product is 100 square meters.

Q: What is the price of the glass curtain wall product?

A: The price of the glass curtain wall product is 580RMB.

Q: What are the packaging details for the glass curtain wall product?

A: The packaging details for the glass curtain wall product are wooden boxes.

Q: What is the delivery time for the glass curtain wall product?

A: The delivery time for the glass curtain wall product is 20-60 work days.

Q: What are the payment terms for the glass curtain wall product?

A: The payment terms for the glass curtain wall product are T/T.



Guangdong SuperHuge Doors and Windows Co., Ltd



+8618819437088



jushuangmenchuang@outlook.com



glass-curtainwall.com

Shop 106, Building 5, Greenland Shangpin Garden, No. 6, East Extension Line of Fochen Road, Nanchong Community, Chencun Town, Shunde District, Foshan City, Guangdong Province