



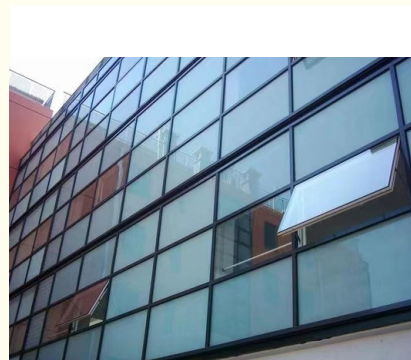
Residential Glass Curtain Wall Aluminum With Adjustable Light 1.4-5.0mm Panel

Our Product Introduction

for more products please visit us on glass-curtainwall.com

Basic Information

- Place of Origin: China
- Brand Name: GuangdongSuperHuge
- Certification: CE,ISO
- Model Number: MQ
- Minimum Order Quantity: 100m²
- Price: 588RMB/m²
- Packaging Details: Wooden Box/Completely sealed wooden box
- Delivery Time: 20-60work days
- Payment Terms: T/T



Product Specification

- Function: Soundproof ,Adjust The Light
- Panel Thickness: 1.4~5.0mm
- Protection: Thermal Insulation
- Advantage: Waterproof, Soundproof, Energy Saving
- Patterns Selection: Customized Design Available
- Aluminium Color: Any Color
- Aesthetics: Sleek And Modern
- Heat Insulation: Yes
- Material: Aluminum Alloy
- Column: 2.5mm-5.0mm
- Beams: 2.0mm-3.0mm
- Glass: Toughened Glass
- Type Of Glass: Customisation

Product Description

Product Description:

One of the advantages of the Glass Curtain Wall is that it is waterproof, which means that it can withstand harsh weather conditions. This feature is especially important for buildings located in areas with heavy rainfall or snow. Additionally, the Glass Curtain Wall is soundproof, which makes it an excellent choice for buildings located in busy areas. This feature helps to reduce noise pollution and create a peaceful environment inside the building.

Another advantage of the Glass Curtain Wall is that it is energy-saving. The Glass Curtain Wall is designed to provide thermal insulation, which means that it can help to reduce energy costs by preventing heat loss during the winter and keeping the building cool during the summer. This feature is particularly important for buildings located in areas with extreme temperatures.

The Glass Curtain Wall is also an aesthetically pleasing product. Its sleek and modern design can enhance the overall appearance of a building. The Glass Curtain Wall's ability to adjust the light can also create a unique look and feel for the building's interior.

The Glass Curtain Wall is designed to provide protection to the building's interior. Its thermal insulation feature helps to keep the building's interior at a comfortable temperature, regardless of the weather outside. This feature can help to reduce energy costs and create a comfortable environment for the building's occupants.

The Glass Curtain Wall is available in any aluminum color, which means that it can be customized to match the building's exterior. This feature allows for endless design possibilities, making the Glass Curtain Wall a versatile product.

In summary, the Glass Curtain Wall is a modern and practical solution for a building's exterior. Its waterproof and soundproof features make it a durable and peaceful option. The Glass Curtain Wall's energy-saving and thermal insulation features help to create a comfortable environment while also reducing energy costs. Its sleek and modern design and ability to adjust the light make it an aesthetically pleasing option. The Glass Curtain Wall's customization options make it a versatile choice for any building.

Features:

Product Name: Glass Curtain Wall

Aesthetics: Sleek And Modern

Patterns Selection: Customized Design Available

Protection: Thermal Insulation

Panel Thickness: 1.4~5.0mm

Durability: Long-lasting

Technical Parameters:

Product Attribute	Value
Glass Curtain Wall	
Aluminium Color	Any Color
Durability	Long-lasting
Advantage	Waterproof, Soundproof, Energy Saving
Heat Insulation	Yes
Patterns Selection	Customized Design Available
Aesthetics	Sleek And Modern
Panel Thickness	1.4~5.0mm
Function	Soundproof ,Adjust The Light
Protection	Thermal Insulation

Applications:

GuangdongSuperHuge's MQ Glass Curtain Wall is a highly versatile product that can be used in a variety of applications. Its sleek and modern aesthetics make it a popular choice for both commercial and residential buildings. The following are some of the product application occasions and scenarios:

Office Buildings: The MQ Glass Curtain Wall is an excellent choice for office buildings. Its energy-saving and soundproof features make it ideal for creating a comfortable and productive work environment.

Shopping Centers: The MQ Glass Curtain Wall is perfect for shopping centers. Its waterproof feature ensures that the building remains dry during rainy seasons. Additionally, its sleek design provides an elegant and modern look, which is perfect for attracting customers.

Hotels: The MQ Glass Curtain Wall is a great choice for hotels. Its soundproof feature allows guests to enjoy a peaceful and comfortable stay. Its modern design also adds to the hotel's aesthetic appeal.

Residential Buildings: The MQ Glass Curtain Wall is an excellent choice for residential buildings. Its energy-saving feature helps to reduce energy costs, while its soundproof feature ensures that residents can enjoy a peaceful and comfortable living environment.

Sports Facilities: The MQ Glass Curtain Wall can also be used in sports facilities. Its waterproof feature ensures that the building remains dry during rainy seasons. Additionally, its soundproof feature helps to reduce noise levels, providing a better environment for athletes.

Customized Designs: The MQ Glass Curtain Wall offers customized design options. This means that customers can choose from a wide range of patterns and designs that best suit their needs and preferences.

Durability: The MQ Glass Curtain Wall is a long-lasting product. Its panel thickness ranges from 1.4 to 5.0mm, ensuring that it can withstand harsh weather conditions.

At GuangdongSuperHuge, we require a minimum order quantity of 100m² for the MQ Glass Curtain Wall product. The product is priced at 580RMB and comes in a wooden box packaging. The delivery time is between 20 to 60 work days, and payment terms are T/T. The product is CE and ISO certified, ensuring its high-quality standards.

Customization:

Brand Name: GuangdongSuperHuge
Model Number: MQ
Place of Origin: China
Certification: CE,ISO
Minimum Order Quantity: 100m²
Price: 580RMB
Packaging Details: Wooden Box
Delivery Time: 20-60work days
Payment Terms: T/T
Protection: Thermal Insulation
Patterns Selection: Customized Design Available
Aluminium Color: Any Color
Heat Insulation: Yes
Advantage: Waterproof, Soundproof, Energy Saving

Support and Services:

Our Glass Curtain Wall product comes with comprehensive technical support and services to ensure the best performance and longevity of the product. Our team of experts can provide assistance with installation, maintenance, and repairs to keep the curtain wall system in top condition.

We also offer customization services to meet the unique needs and requirements of your project. Our engineers can work with you to design a curtain wall system that meets your specifications and delivers exceptional performance.

For any technical issues or questions, our customer support team is available to provide prompt and effective solutions. We are committed to delivering high-quality products and services that meet the highest standards of excellence.

Packing and Shipping:

Product Packaging:

The Glass Curtain Wall product will be packaged carefully to ensure it arrives at your doorstep in perfect condition. The product will be wrapped in protective materials and placed in a sturdy cardboard box.

Shipping:

Our shipping partner will deliver the Glass Curtain Wall product to your location. Delivery times may vary depending on your location. We will provide you with a tracking number so that you can monitor the progress of your shipment.

FAQ:

Here are the answers to some frequently asked questions about our GuangdongSuperHuge MQ Glass Curtain Wall:

Q: What is the minimum order quantity for the GuangdongSuperHuge MQ Glass Curtain Wall?

A: The minimum order quantity for the GuangdongSuperHuge MQ Glass Curtain Wall is 100m².

Q: What is the price of the GuangdongSuperHuge MQ Glass Curtain Wall?

A: The price of the GuangdongSuperHuge MQ Glass Curtain Wall is 580RMB.

Q: Where is the GuangdongSuperHuge MQ Glass Curtain Wall made?

A: The GuangdongSuperHuge MQ Glass Curtain Wall is made in China.

Q: What certifications does the GuangdongSuperHuge MQ Glass Curtain Wall have?

A: The GuangdongSuperHuge MQ Glass Curtain Wall has CE and ISO certifications.

Q: What are the packaging details for the GuangdongSuperHuge MQ Glass Curtain Wall?

A: The GuangdongSuperHuge MQ Glass Curtain Wall is packaged in wooden boxes.

Q: What are the payment terms for the GuangdongSuperHuge MQ Glass Curtain Wall?

A: The payment terms for the GuangdongSuperHuge MQ Glass Curtain Wall are T/T.

Q: What is the delivery time for the GuangdongSuperHuge MQ Glass Curtain Wall?

A: The delivery time for the GuangdongSuperHuge MQ Glass Curtain Wall is 20-60 work days.



Guangdong SuperHuge Doors and Windows Co., Ltd



+8618819437088



jushuangmenchuang@outlook.com



glass-curtainwall.com

Shop 106, Building 5, Greenland Shangpin Garden, No. 6, East Extension Line of Focheng Road, Nanchong Community, Chencun Town, Shunde District, Foshan City, Guangdong Province