



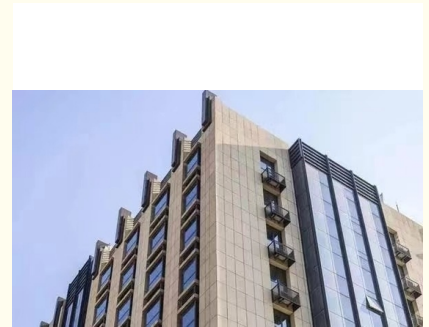
## 25-35mm Stone Curtain Wall Enhances Modern Design with Excellent Insulation

### Our Product Introduction

for more products please visit us on [glass-curtainwall.com](http://glass-curtainwall.com)

#### Basic Information

- Place of Origin: China
- Brand Name: GuangdongSuperHuge
- Certification: CE,ISO
- Model Number: MQ
- Minimum Order Quantity: 100m<sup>2</sup>
- Price: 488RMB/m<sup>2</sup>
- Packaging Details: Wooden Box/Completely sealed wooden box
- Delivery Time: 20-60work days
- Payment Terms: T/T



#### Product Specification

- Application: Exterior Wall
- Design Style: Modern
- Installation Method: Dry-hanging
- Size: Customizable
- Thermal Insulation: Excellent
- Color: Customizable
- Thickness: 25-35mm
- Maintenance: Low
- Material: Slate
- Supporting Structure: Customisation
- Slate: Customisation
- Color Of Stone: Customisation
- Color: Customisation

## Product Description

### Product Description:

One of the best things about this product is its thermal insulation. With excellent insulation properties, you can enjoy a comfortable and energy-efficient environment all year round. This not only helps to reduce your energy bills but also helps to reduce your carbon footprint. The Stone Curtain Wall is also highly customizable, making it the perfect choice for those who want to create a unique and personalized look for their building. Whether you want a specific color or texture, we can work with you to create a product that meets your exact requirements.

In terms of maintenance, the Stone Curtain Wall is extremely low maintenance. Unlike other exterior products, it does not require regular cleaning or upkeep. This makes it an ideal choice for those who want a hassle-free solution for their building.

Whether you are renovating an existing building or constructing a new one, the Stone Curtain Wall is a great choice. It is perfect for the ground floor of a building, providing a solid and reliable barrier against the elements. With its excellent insulation properties, you can enjoy a comfortable and energy-efficient environment all year round.

In summary, the Stone Curtain Wall is an excellent product that offers a range of benefits. With its high-quality stone construction, thermal insulation, and customizable design, it is the perfect choice for those who want a reliable and long-lasting solution for their building.

Whether you are looking to renovate an existing building or construct a new one, the Stone Curtain Wall is a great choice.

### Features:

Product Name: Stone Curtain Wall

Installation Method: Dry-hanging

Color: Customizable

Size: Customizable

Design Style: Modern

Shape: Customizable

The Stone Curtain Wall is a customizable dry-hanging wall system that is perfect for modern design styles. It can be customized to fit any size or shape, making it ideal for a variety of applications. Whether you are building a new office building or renovating the ground floor of an existing space, the Stone Curtain Wall is a great choice. With its customizable color and design options, it is easy to create a unique and stylish look that will set your building apart.

### Technical Parameters:

Thickness	25-35mm
Design Style	Modern
Shape	Customizable
Application	Exterior Wall
Size	Customizable
Material	Stone
Color	Customizable
Maintenance	Low
Installation Method	Dry-hanging
Thermal Insulation	Excellent

This Stone Curtain Wall product is suitable for customisation and is designed in a modern style. Its thickness ranges from 25-35mm and it is made of stone material. It can be customised in terms of size and color. It is a low maintenance product that can be dry-hung during installation. It provides excellent thermal insulation and is suitable for use as an exterior wall. Ideal for use on the ground floor.

### Applications:

One of the key application scenarios for the MQ Stone Curtain Wall is the ground floor of commercial and residential buildings. The dry-hanging installation method makes it easy to install and maintain, while the 25-35mm thickness provides sufficient insulation and protection against external elements. The natural stone texture of the curtain wall adds a touch of elegance and sophistication to any building facade, making it an ideal choice for high-end retail stores, hotels, and office buildings.

Another application scenario for the MQ Stone Curtain Wall is in outdoor recreational facilities such as parks and gardens. The natural stone texture and color blend seamlessly with the surrounding environment, providing a harmonious and aesthetically pleasing outdoor experience. Additionally, the low maintenance requirements of the curtain wall make it an ideal choice for outdoor facilities that may not receive regular upkeep.

Finally, the MQ Stone Curtain Wall is also suitable for use in public buildings such as museums and libraries. The natural stone texture and thickness provide an added layer of protection against external noise and temperature fluctuations, creating a comfortable and conducive environment for learning and exploration. The dry-hanging installation method also ensures that the installation process is quick and efficient, minimizing disruption to the daily operations of the building.

In summary, GuangdongSuperHuge's MQ Stone Curtain Wall product is a durable, low-maintenance, and versatile exterior wall solution suitable for a wide range of application occasions and scenarios. Whether it's for the ground floor of commercial and residential buildings, outdoor recreational facilities, or public buildings, the natural stone texture and dry-hanging installation method make it an ideal choice for

anyone looking to enhance the beauty and functionality of their building facade.

## Customization:

## Support and Services:

The Stone Curtain Wall product technical support and services include:  
Consultation with architects and designers to determine the best application of the product  
Assistance with product selection and customization options  
Technical drawings and specifications  
Installation instructions and support  
Maintenance and repair services  
Warranty and product performance guarantees

## Packing and Shipping:

Product Packaging:  
The Stone Curtain Wall product will be packed in a sturdy cardboard box.  
The box will be sealed with tape to ensure that the product stays secure during shipping.  
Inside the box, the Stone Curtain Wall product will be wrapped in bubble wrap or foam to prevent any damage during transit.  
The product will also include installation instructions and any necessary hardware.  
Shipping:  
Our shipping partner will deliver the product directly to your doorstep.  
The estimated delivery time will be provided to you at the time of purchase.  
Shipping costs will be calculated based on your location and added to the final cost of the product.  
Please ensure that someone is available to receive the product at the delivery address.

## FAQ:

**Q: What is the brand name of this product?**  
A: The brand name of this product is GuangdongSuperHuge.  
**Q: What is the model number of this product?**  
A: The model number of this product is MQ.  
**Q: Where is this product manufactured?**  
A: This product is manufactured in China.  
**Q: What is the material used in making this product?**  
A: The material used in making this product is stone.  
**Q: Is this product suitable for outdoor use?**  
A: Yes, this product is suitable for outdoor use as it is a curtain wall designed to protect the building from outdoor elements.



**Guangdong SuperHuge Doors and Windows Co., Ltd**



+8618819437088



jushuangmenchuang@outlook.com



glass-curtainwall.com

Shop 106, Building 5, Greenland Shangpin Garden, No. 6, East Extension Line of Focheng Road, Nanchong Community, Chencun Town, Shunde District, Foshan City, Guangdong Province