



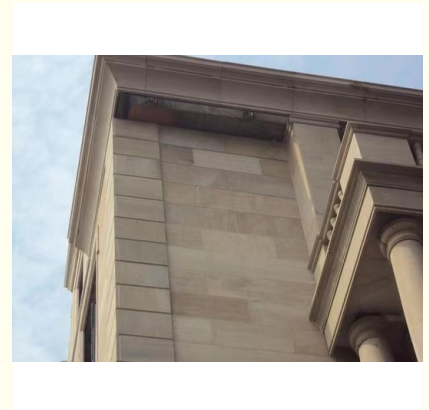
## Custom Stone Wall Insulation Modern Design Style Dry Hanging Installation for Aesthetic Appeal

### Our Product Introduction

for more products please visit us on [glass-curtainwall.com](http://glass-curtainwall.com)

#### Basic Information

- Place of Origin: China
- Brand Name: GuangdongSuperHuge
- Certification: CE,ISO
- Model Number: MQ
- Minimum Order Quantity: 100m<sup>2</sup>
- Price: 488RMB/m<sup>2</sup>
- Packaging Details: Wooden Box/Completely sealed wooden box
- Delivery Time: 20-60work days
- Payment Terms: T/T



#### Product Specification

- Thermal Insulation: Excellent
- Shape: Customizable
- Color: Customizable
- Thickness: 25-35mm
- Design Style: Modern
- Installation Method: Dry-hanging
- Size: Customizable
- Material: Stone
- Material: Slate
- Supporting Structure: Customisation
- Slate: Customisation
- Color Of Stone: Customisation
- Color: Customisation

## Product Description

### Product Description:

Maintenance is made easy with the Stone Curtain Wall product, as it requires low maintenance and is highly durable. This makes it the perfect choice for those who are looking for a long-lasting solution that requires minimal upkeep. One of the key advantages of the Stone Curtain Wall product is its customisability. You can choose the size, color, and shape of the wall to suit your specific requirements. This ensures that your building looks unique and blends seamlessly with the surrounding environment. The Stone Curtain Wall product is made from slate, a natural material that is renowned for its durability and strength. This means that your building will be protected from the elements and will remain structurally sound for years to come. With its excellent thermal insulation, low maintenance, and customisable design, the Stone Curtain Wall product is the perfect choice for anyone who wants a high-quality and reliable solution for their building needs. Contact us today to learn more about how the Stone Curtain Wall can transform your building!

### Features:

Product Name: Stone Curtain Wall  
Size: Customizable  
Design Style: Modern  
Thickness: 25-35mm  
Maintenance: Low  
Material: Stone (Slate)

### Technical Parameters:

|                      |               |
|----------------------|---------------|
| Maintenance:         | Low           |
| Installation Method: | Dry-hanging   |
| Design Style:        | Modern        |
| Shape:               | Customizable  |
| Thermal Insulation:  | Excellent     |
| Application:         | Exterior Wall |
| Size:                | Customizable  |
| Color:               | Customizable  |
| Material:            | Stone         |
| Thickness:           | 25-35mm       |

### Applications:

One of the best things about the MQ Stone Curtain Wall is that it is customizable in terms of shape and size. This means that it can be tailored to fit the specific needs and requirements of any building or construction project. This customisation feature also ensures that the product is easy to install and maintain, making it a cost-effective choice for those looking for long-term solutions for their exterior walls. The MQ Stone Curtain Wall is perfect for a variety of different occasions and scenarios. It can be used in residential buildings, commercial buildings, and even industrial buildings. Its thermal insulation properties make it particularly useful in areas with extreme temperatures, ensuring that buildings remain comfortable all year round. Because this product is so versatile, it can be used in a variety of different applications. For example, the MQ Stone Curtain Wall is perfect for use in modern and contemporary buildings, where it can be used to create a striking and unique look. It is also a great choice for traditional buildings, where it can be used to add a touch of elegance and sophistication. Overall, the MQ Stone Curtain Wall is a great choice for anyone looking for a high-quality, customizable, and low-maintenance exterior wall solution. With its excellent thermal insulation properties and versatility, it is sure to meet the needs of any building or construction project.

### Customization:

Customize your GuangdongSuperHuge Stone Curtain Wall (model number: MQ) from China to fit your specific needs. The shape of the wall is completely customizable to suit your building's design needs, and its low maintenance requirements make it ideal for commercial spaces. The wall provides excellent thermal insulation, making it an energy-efficient option for any building. Its modern design style adds a sophisticated touch to any project. The Stone Curtain Wall is 25-35mm thick and is perfect for use on the ground floor. Made from slate, this wall is durable and long-lasting.

### Support and Services:

The Stone Curtain Wall product technical support and services include:

- Assistance with product installation and maintenance
- Troubleshooting common issues and providing solutions
- Providing technical specifications and documentation
- Offering training and education on proper use and care of the product
- Providing replacement parts and repair services
- Collaborating with architects and contractors to ensure proper integration of the product into building design and construction

## Packing and Shipping:

Product Packaging:

The Stone Curtain Wall product will be securely packaged in a wooden crate to prevent any damage during shipping. The crate will be labeled with the product name and any necessary handling instructions.

Shipping Information:

The Stone Curtain Wall product will be shipped via freight carrier. Delivery time may vary depending on the destination, but typically takes 5-10 business days. The customer will be provided with a tracking number to monitor the shipment status. It is the customer's responsibility to ensure that someone is available to receive and sign for the delivery upon arrival.

## FAQ:

**Q: What is the brand name of this product?**

A: The brand name of this product is GuangdongSuperHuge.

**Q: What is the model number of this product?**

A: The model number of this product is MQ.

**Q: Where is this product manufactured?**

A: This product is manufactured in China.

**Q: What is the material used in making this product?**

A: The material used in making this product is stone.

**Q: Does this product come with installation instructions?**

A: Yes, this product comes with installation instructions.



**Guangdong SuperHuge Doors and Windows Co., Ltd**



+8618819437088



jushuangmenchuang@outlook.com



glass-curtainwall.com

Shop 106, Building 5, Greenland Shangpin Garden, No. 6, East Extension Line of Focheng Road, Nanchong Community, Chencun Town, Shunde District, Foshan City, Guangdong Province