



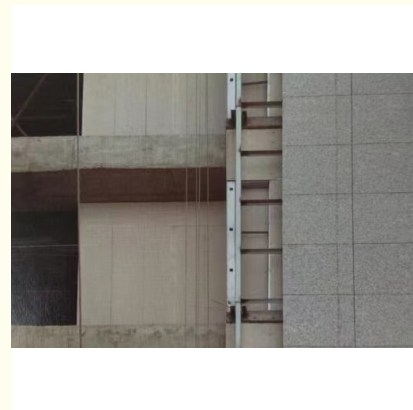
## Customizable Stone Dry Hanging Curtain Wall with Low Maintenance

### Our Product Introduction

for more products please visit us on [glass-curtainwall.com](http://glass-curtainwall.com)

#### Basic Information

- Place of Origin: China
- Brand Name: GuangdongSuperHuge
- Certification: CE,ISO
- Model Number: MQ
- Minimum Order Quantity: 100m<sup>2</sup>
- Price: 488RMB/m<sup>2</sup>
- Packaging Details: Wooden Box/Completely sealed wooden box
- Delivery Time: 20-60work days
- Payment Terms: T/T



#### Product Specification

- Material: Stone
- Installation Method: Dry-hanging
- Thickness: 25-35mm
- Application: Exterior Wall
- Maintenance: Low
- Size: Customizable
- Color: Customizable
- Shape: Customizable
- Material: Slate
- Supporting Structure: Customisation
- Slate: Customisation
- Color Of Stone: Customisation
- Color: Customisation

## Product Description

### Product Description:

The Stone Curtain Wall's shape is customizable, allowing you to choose the perfect design to complement your building's aesthetic. The thickness of the stone ranges from 25-35mm, providing a sturdy and secure foundation for the wall. Additionally, the size is also customizable, ensuring a perfect fit for any building.

Our Stone Curtain Wall product is an excellent choice for any building, whether it's a commercial or residential property. The ground floor can benefit greatly from the added security and insulation, while also providing an elegant and sophisticated look.

The use of Slate in the Stone Curtain Wall product ensures a unique and beautiful finish that will stand out from traditional brick or concrete walls. The natural texture and color variations of Slate add depth and character to any building, making it a popular choice among architects and designers.

Investing in our Stone Curtain Wall product is a smart decision for any building owner or contractor. Its durability, customization options, and unique beauty make it a valuable addition to any property.

### Features:

Product Name: Stone Curtain Wall

Size: Customizable

Material: Stone (Slate)

Design Style: Modern

Thermal Insulation: Excellent

Maintenance: Low

### Technical Parameters:

Maintenance	Low
Thickness	25-35mm
Thermal Insulation	Excellent
Design Style	Modern
Shape	Customizable
Material	Stone
Color	Customizable
Installation Method	Dry-hanging
Application	Exterior Wall
Size	Customizable

### Applications:

The Stone Curtain Wall product is particularly well-suited for use on the ground floor of buildings, where it can be used to create a stunning and eye-catching facade that is sure to attract attention. The product's dry-hanging installation method makes it easy to install and maintain, and its low maintenance requirements mean that it is an affordable and practical choice for any building project.

Whether you are looking to create a bold and modern facade for a commercial building, or you want to add a touch of luxury to a residential property, the MQ Stone Curtain Wall product is the perfect choice. Its thickness of 25-35mm gives it a substantial and sturdy feel, while its customizable size means that it can be tailored to fit any architectural design.

Overall, the MQ Stone Curtain Wall product is an excellent choice for anyone looking for a high-quality and versatile exterior wall decoration solution. With its low maintenance requirements, easy installation method, and modern design style, it is sure to add value and beauty to any building project. So whether you are a homeowner, architect, or builder, be sure to consider the MQ Stone Curtain Wall for your next project.

### Customization:

Our Stone Curtain Wall, model number MQ, is manufactured by GuangdongSuperHuge in China. It is made of high-quality stone material and requires low maintenance. The color is fully customizable to meet your specific needs. The installation method is dry-hanging, making it easy and efficient to install. Additionally, it offers excellent thermal insulation properties, ensuring energy efficiency for your building.

At GuangdongSuperHuge, we offer customisation services for our Stone Curtain Wall to meet your specific project requirements. Contact us today to discuss your needs and let us help you create the perfect Curtain Wall for your project.

### Support and Services:

The Stone Curtain Wall product technical support and services include:

Assistance with installation and maintenance of the product  
Consultation regarding design and engineering of the product  
Training for contractors and other professionals on how to properly use and handle the product  
Access to technical documentation and product specifications  
Warranty and repair services  
24/7 customer support for any questions or issues with the product

## Packing and Shipping:

### Product Packaging:

The Stone Curtain Wall product will be packaged in a sturdy wooden crate to ensure its protection during transportation. The crate will be sealed and labelled with the product information and handling instructions.

### Shipping:

The Stone Curtain Wall product will be shipped via a reliable freight carrier. The shipping cost will be calculated based on the weight and destination of the product. The estimated delivery time will be provided to the customer upon placing the order.

## FAQ:

Q: What is the brand name of the Stone Curtain Wall product?

A: The brand name of the Stone Curtain Wall product is GuangdongSuperHuge.

Q: What is the model number of the Stone Curtain Wall product?

A: The model number of the Stone Curtain Wall product is MQ.

Q: Where is the Stone Curtain Wall product made?

A: The Stone Curtain Wall product is made in China.

Q: What materials are used to make the Stone Curtain Wall product?

A: The Stone Curtain Wall product is made of natural stone and aluminum alloy.

Q: Is installation included with the purchase of the Stone Curtain Wall product?

A: Installation is not included with the purchase of the Stone Curtain Wall product. It is recommended to hire a professional installer for proper installation.



**Guangdong SuperHuge Doors and Windows Co., Ltd**



+8618819437088



jushuangmenchuang@outlook.com



glass-curtainwall.com

Shop 106, Building 5, Greenland Shangpin Garden, No. 6, East Extension Line of Focheng Road, Nanchong  
Community, Chencun Town, Shunde District, Foshan City, Guangdong Province