



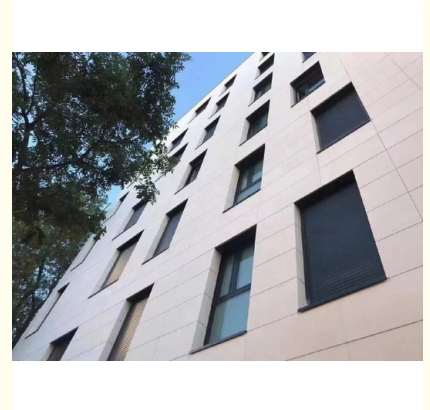
Personalized The ground floor with Modern Design Excellent Insulation and Low Maintenance

Our Product Introduction

for more products please visit us on glass-curtainwall.com

Basic Information

- Place of Origin: China
- Brand Name: GuangdongSuperHuge
- Certification: CE,ISO
- Model Number: MQ
- Minimum Order Quantity: 100m²
- Price: 488RMB/m²
- Packaging Details: Wooden Box/Completely sealed wooden box
- Delivery Time: 20-60work days
- Payment Terms: T/T



Product Specification

- Thermal Insulation: Excellent
- Material: Stone
- Color: Customizable
- Design Style: Modern
- Thickness: 25-35mm
- Maintenance: Low
- Shape: Customizable
- Application: Exterior Wall
- Material: Slate
- Supporting Structure: Customisation
- Slate: Customisation
- Color Of Stone: Customisation
- Color: Customisation

Product Description

Product Description:

The Stone Curtain Wall is perfect for anyone looking for a modern and stylish solution to their exterior wall needs. The design style is sleek and contemporary, making it the perfect addition to any building or home.

Our Stone Curtain Wall is made from only the highest quality materials, ensuring that it is both durable and long-lasting. The use of slate as the primary material ensures that the curtain wall is not only beautiful but also resistant to wear and tear.

One of the best things about our Stone Curtain Wall is that it is highly customisable. This means that you can choose from a variety of different colours and finishes to suit your individual needs. Whether you are looking for a more traditional or modern look, we have the perfect option for you.

The Stone Curtain Wall is also perfect for anyone looking for excellent thermal insulation. The thickness of the wall ensures that it is able to retain heat effectively, making it ideal for use in colder climates.

Overall, our Stone Curtain Wall is the perfect solution for anyone looking for a modern and stylish exterior wall option. With its high-quality slate material, excellent thermal insulation, and customisable design, it is sure to meet all of your needs.

Features:

Product Name: Stone Curtain Wall

Size: Customizable

Application: Exterior Wall

Thickness: 25-35mm

Installation Method: Dry-hanging

Material: Slate

Thermal Insulation: Excellent

Technical Parameters:

Design Style	Modern
Application	Exterior Wall
Material	Stone
Installation Method	Dry-hanging
Shape	Customizable
Color	Customizable
Thermal Insulation	Excellent
Size	Customizable
Thickness	25-35mm
Maintenance	Low

Applications:

The Stone Curtain Wall product is perfect for commercial and residential buildings that require a durable and long-lasting exterior wall solution. The product's customizable feature makes it an ideal product for architects and designers who want to create unique and modern building designs. The product can be customized to match the color scheme of the building, adding to its aesthetic appeal.

The Stone Curtain Wall product is made from slate, which is a durable and versatile material that is perfect for exterior wall applications. The product is designed to withstand harsh weather conditions and is ideal for buildings located in areas with extreme weather conditions. The product's low maintenance feature means that it requires minimal upkeep, making it a cost-effective solution for building owners.

The Stone Curtain Wall product is perfect for buildings with multiple floors, and it is especially suited for the ground floor of a building. The product's durability and low maintenance feature make it an ideal solution for high-traffic areas of a building. The product's customizable feature means that it can be tailored to suit the specific design requirements of the building.

In summary, GuangdongSuperHuge's MQ Stone Curtain Wall is a customizable and durable product that is perfect for exterior wall applications. The product is made from high-quality stone material and is designed to withstand harsh weather conditions. The product's low maintenance feature makes it a cost-effective solution for building owners, and its customizable feature makes it an ideal product for architects and designers who want to create unique and modern building designs.

Customization:

Support and Services:

The Stone Curtain Wall product technical support and services include:

Consultation on product selection and application
Assistance with product installation and maintenance
Troubleshooting and resolution of technical issues
Training on product usage and best practices
Regular updates on product developments and improvements

Packing and Shipping:

Product Packaging:

Each unit of our Stone Curtain Wall product is carefully packaged in a sturdy cardboard box to ensure safe transportation. Inside the box, the product is wrapped in protective materials to prevent any damage during shipping.

Shipping:

We offer free shipping on all orders of our Stone Curtain Wall product. Our shipping partners will deliver the product to your doorstep within 7-10 business days from the date of order. For international orders, additional shipping charges may apply and delivery times may vary depending on the destination.

FAQ:

Q: What is the brand name of this curtain wall product?

A: The brand name of this product is GuangdongSuperHuge.

Q: What is the model number of this curtain wall product?

A: The model number of this product is MQ.

Q: Where is this curtain wall product manufactured?

A: This product is manufactured in China.

Q: What materials are used to make this curtain wall product?

A: This product is made of high-quality stone materials such as granite and marble.

Q: Can this curtain wall product be customized according to specific project requirements?

A: Yes, this product can be customized according to specific project requirements to meet your design needs.



Guangdong SuperHuge Doors and Windows Co., Ltd



+8618819437088



jushuangmenchuang@outlook.com



glass-curtainwall.com

Shop 106, Building 5, Greenland Shangpin Garden, No. 6, East Extension Line of Fochan Road, Nanchong
Community, Chencun Town, Shunde District, Foshan City, Guangdong Province