



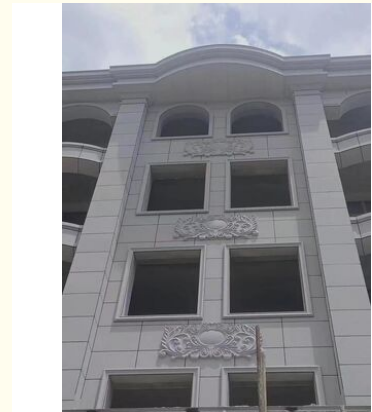
## Sleek 30mm Stone Curtain Wall Customizable Color and Shape Easy Dry Hanging Installation

### Our Product Introduction

for more products please visit us on [glass-curtainwall.com](http://glass-curtainwall.com)

#### Basic Information

- Place of Origin: China
- Brand Name: GuangdongSuperHuge
- Certification: CE,ISO
- Model Number: MQ
- Minimum Order Quantity: 100m<sup>2</sup>
- Price: 488RMB/m<sup>2</sup>
- Packaging Details: Wooden Box/Completely sealed wooden box
- Delivery Time: 20-60work days
- Payment Terms: T/T



#### Product Specification

- Size: Customizable
- Application: Exterior Wall
- Thickness: 25-35mm
- Shape: Customizable
- Design Style: Modern
- Color: Customizable
- Installation Method: Dry-hanging
- Material: Stone
- Material: Slate
- Supporting Structure: Customisation
- Slate: Customisation
- Color Of Stone: Customisation
- Color: Customisation

## Product Description

### Product Description:

Our Stone Curtain Wall product is perfect for those looking to add a touch of elegance and sophistication to their building's exterior. With the option for customisation of both color and shape, you can create a unique and personalised look that perfectly complements your building's style and aesthetic.

The Stone Curtain Wall product is particularly well-suited for use on the ground floor of buildings, where a striking and visually appealing design can make all the difference. It is designed to provide a seamless and uniform look, and can be easily installed to create a stunning and modern facade.

At our company, we take pride in delivering only the highest quality products to our customers. Our Stone Curtain Wall product is no exception, and we guarantee that it will meet and exceed your expectations. So if you're looking for a way to add a touch of luxury to your building's exterior, look no further than our Stone Curtain Wall product.

### Features:

Product Name: Stone Curtain Wall

Material: Stone

Maintenance: Low

Installation Method: Dry-hanging

Size: Customizable

Thickness: 25-35mm

The Stone Curtain Wall is a low-maintenance wall made of stone. Its dry-hanging installation method makes it easy to install and customize to any size. With a thickness of 25-35mm, this product is perfect for adding a natural touch to The ground floor of any building. The customizable size feature allows for a unique and tailored design. Elevate your building's exterior with the stunning Stone curtain wall.

### Technical Parameters:

Design Style	Modern
Maintenance	Low
Application	Exterior Wall
Installation Method	Dry-hanging
Thermal Insulation	Excellent
Thickness	25-35mm
Color	Customizable
Material	Stone
Shape	Customizable
Size	Customizable

### Applications:

One of the main advantages of the MQ Stone Curtain Wall is its customisation options. The product is highly versatile and can be tailored to meet the specific needs of any project. The shape and color of the curtain wall can be customized to match the design style of the building, making it a popular choice for modern architectural projects.

The MQ Stone Curtain Wall is suitable for a variety of occasions and scenarios. It is commonly used in the construction of high-rise buildings, shopping malls, hotels, and office buildings. The product's excellent thermal insulation properties make it ideal for use in areas with extreme temperatures, such as hot and humid climates or cold and windy environments.

In addition to its thermal insulation properties, the MQ Stone Curtain Wall is also known for its durability and longevity. It is resistant to corrosion and can withstand exposure to harsh weather conditions. This makes it a low-maintenance and cost-effective solution for building exteriors.

Overall, the MQ Stone Curtain Wall is a versatile, customizable, and reliable product that is well-suited for a wide range of building applications. Its modern design style and excellent thermal insulation properties make it a popular choice for architects and builders around the world.

### Customization:

Customize your Stone Curtain Wall with our Product Customization Services:

Brand Name: GuandongSuperHuge

Model Number: MQ

Place of Origin: China

Thermal Insulation: Excellent

Size: Customizable

Material: Stone

Application: Exterior Wall

Thickness: 25-35mm

Our Stone Curtain Wall product is made of high-quality slate and provides excellent thermal insulation. With our customization services, you can tailor the size of your curtain wall to fit your specific needs. This product is perfect for use on exterior walls and has a thickness of 25-35mm. Trust GuangdongSuperHuge for your slate and stone curtain wall needs.

## Support and Services:

The Stone Curtain Wall product is designed to provide a durable and visually appealing exterior for buildings. Our technical support team is available to assist with any questions or concerns regarding the installation and maintenance of the product. Additionally, we offer a range of services including:

Custom design and engineering

On-site consultation and assessment

Installation supervision and training

Regular maintenance and cleaning

Repair and replacement of damaged components

Our goal is to ensure the long-term performance and aesthetic integrity of the Stone Curtain Wall product for our customers.

## Packing and Shipping:

Product Packaging:

The Stone Curtain Wall product will be securely packaged in a sturdy cardboard box with ample cushioning material to ensure safe transport. Each piece of stone will be individually wrapped and labeled for easy identification.

Shipping:

The Stone Curtain Wall product will be shipped via a reputable shipping company to ensure timely and safe delivery. The shipping cost will be calculated based on the weight and destination of the order. Customers will receive a tracking number once the order has been shipped.

## FAQ:

GuangdongSuperHuge

. 2. Q: What is the model number of this curtain wall product? A: The model number of this curtain wall product is MQ

. 3. Q: Where is this curtain wall product manufactured? A: This curtain wall product is manufactured in China

. 4. Q: What are the main features of this curtain wall product? A: The main features of this curtain wall product include high durability, weather resistance, and a sleek, modern design. 5. Q: Can this curtain wall product be customized to fit specific building dimensions? A: Yes, this curtain wall product can be customized to fit specific building dimensions. Please contact our customer service team for more information.



**Guangdong SuperHuge Doors and Windows Co., Ltd**



+8618819437088



windowsjs8@gmail.com



glass-curtainwall.com

Shop 106, Building 5, Greenland Shangpin Garden, No. 6, East Extension Line of Fochan Road, Nanchong Community, Chencun Town, Shunde District, Foshan City, Guangdong Province