



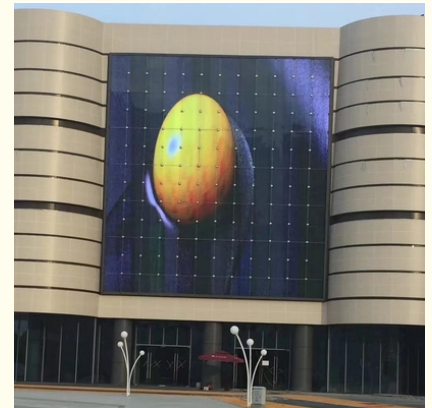
Adjustable Brightness Building Glass Curtain Wall LED Display High Energy Efficiency

Our Product Introduction

for more products please visit us on glass-curtainwall.com

Basic Information

- Place of Origin: China
- Brand Name: GuangdongSuperHuge
- Certification: CE,ISO
- Model Number: MQ
- Minimum Order Quantity: 100m²
- Price: 688-2088RMB/m²
- Packaging Details: Wooden Box/Completely sealed wooden box
- Delivery Time: 20-60work days
- Payment Terms: T/T



Product Specification

- Brightness: Adjustable
- Color: Customisation
- Power Supply: AC/DC
- Control System: Remote Control/Smartphone App
- Energy Efficiency: High
- Size: Customisation
- Installation: Vertical/Horizontal
- Frame Material: Aluminum Alloy
- Material: Glass
- Name: Building Glass Curtain Wall LED Display
- Highlight: **Adjustable Brightness Building Glass Curtain Wall**
, Building Glass Curtain Wall LED Display

Product Description

Product Description:

The LED Glass Curtain Wall is powered by both AC and DC power supplies, allowing for flexible installation options. The installation can be configured to either vertical or horizontal positions, depending on your specific needs. This ensures that you have complete control over the placement and orientation of the product to achieve the desired effect.

The brightness of the LED Glass Curtain Wall is adjustable, providing you with the flexibility to customize the display to suit your needs. This feature makes it ideal for a range of applications, from creating a dynamic advertising display to setting the perfect ambiance for a special event.

The control system for the LED Glass Curtain Wall is both user-friendly and versatile. It can be controlled using a remote control for ease of use or via a smartphone app, which allows for greater customization and flexibility. This feature enables you to easily switch between different settings and display modes, giving you complete control over the display.

The LED Glass Curtain Wall is specifically designed to be a cost-effective solution for creating stunning visual displays. It is perfect for use in a variety of settings, including retail spaces, corporate offices, hotels, and more. The product is designed to be both durable and long-lasting, ensuring that it will provide years of reliable use.

The LED Glass Curtain Wall is a perfect example of the latest innovation in glass curtain walls. The product is designed to be sleek and stylish, providing a modern and contemporary look that is sure to impress. The curtain LED display is perfect for creating a dynamic and visually stunning effect that is sure to capture the attention of your audience.

We offer LED customization options to ensure that your product is tailored to your specific needs. Our team of experts will work with you to create a unique and visually stunning display that will take your space to the next level.

Features:

Product Name: LED Glass Curtain Wall

Control System: Remote Control/Smartphone App

Transparency: Transparent

Color: Customizable

Energy Efficiency: High

Brightness: Adjustable

The LED Glass Curtain Wall is a modern and innovative product that combines the functionality of Glass Curtain Walls with the visual appeal of a Curtain LED Display. With its transparent design, customizable color options, and high energy efficiency, this product is the perfect solution for businesses and organizations looking to make a statement. The adjustable brightness feature allows for optimal visibility in any environment.

Technical Parameters:

Application	Indoor/Outdoor
Transparency	Transparent
Light Source	LED
Energy Efficiency	High
Material	Glass
Brightness	Adjustable
Control System	Remote Control/Smartphone App
Color	Customizable
Power Supply	AC/DC
Frame Material	Aluminum Alloy

Applications:

The size of the MQ LED Glass Curtain Wall is customizable, making it a versatile product that can be tailored to meet the specific requirements of any project. The frame material used is aluminum alloy, which is lightweight, durable and corrosion-resistant. The aluminum curtain wall also provides a sleek and modern look that complements the transparency of the glass panels.

The transparency of the glass curtain walls is another key attribute of this product. The panels are designed to provide unobstructed views and allow natural light to enter the building. This feature creates an open and inviting environment that is ideal for a variety of commercial and residential applications.

The MQ LED Glass Curtain Wall also comes equipped with a control system that allows users to adjust the brightness of the LED lights. This feature is particularly useful for creating different atmospheres and moods, depending on the occasion or scenario. The control system can be operated through a remote control or a smartphone app, providing users with a convenient and user-friendly interface.

The MQ LED Glass Curtain Wall is suitable for a wide range of product application occasions and scenarios. It is ideal for commercial buildings such as offices, hotels, and retail spaces. The product can also be used in residential applications, such as apartments and condominiums. Additionally, the product is suitable for public buildings, such as museums, galleries, and exhibition halls.

In summary, Guangdong SuperHuge's MQ LED Glass Curtain Wall is a state-of-the-art product that combines form and function to create a visually stunning and energy-efficient architectural solution. Its customizability, transparency, and brightness control make it ideal for a

range of product application occasions and scenarios in commercial, residential, and public buildings.

Customization:

Support and Services:

- Expert installation and setup guidance.
 - Ongoing technical assistance via phone and email.
 - On-site troubleshooting and repairs, if necessary.
 - Regular maintenance and cleaning to keep your LED Glass Curtain Wall in top condition.
 - Custom training for your staff to ensure proper operation and maintenance.
 - Access to our online knowledge base and user forums for additional support.
- Our goal is to provide you with a worry-free experience, so you can focus on enjoying the benefits of our LED Glass Curtain Wall product.

Packing and Shipping:

Product Packaging:

LED Glass Curtain Wall panels

Aluminum frames

Mounting brackets

Screws and bolts

User manual

Shipping Information:

Shipping company: UPS

Estimated delivery time: 5-7 business days

Package weight: 100 lbs

Package dimensions: 72" x 48" x 6"

Shipping cost: \$200

Tracking number will be provided once item is shipped.

FAQ:

Q: What is the brand name of the LED Glass Curtain Wall product?

A: The brand name of the product is GuangdongSuperHuge.

Q: What is the model number of the LED Glass Curtain Wall product?

A: The model number of the product is MQ.

Q: Where is the LED Glass Curtain Wall product manufactured?

A: The product is manufactured in China.

Q: Is the LED Glass Curtain Wall product energy-efficient?

A: Yes, the product is designed to be energy-efficient and can help reduce energy costs.

Q: Can the LED Glass Curtain Wall product be customized?

A: Yes, the product can be customized to meet specific project requirements and design preferences.



Guangdong SuperHuge Doors and Windows Co., Ltd



+8618819437088



jshuangmenchuang@outlook.com



glass-curtainwall.com

Shop 106, Building 5, Greenland Shangpin Garden, No. 6, East Extension Line of Focheng Road, Nanchong Community, Chencun Town, Shunde District, Foshan City, Guangdong Province