



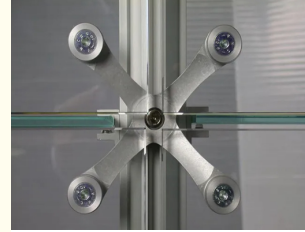
## Customizable Glass Curtain Wall - Waterproof Soundproof Energy Saving

Our Product Introduction

for more products please visit us on [glass-curtainwall.com](http://glass-curtainwall.com)

### Basic Information

- Place of Origin: China
- Brand Name: GuangdongSuperHuge
- Certification: CE,ISO
- Model Number: MQ
- Minimum Order Quantity: 100m<sup>2</sup>
- Price: 580RMB
- Packaging Details: Wooden Box
- Delivery Time: 20-60work days
- Payment Terms: T/T

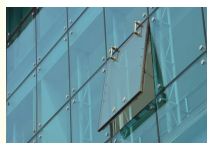
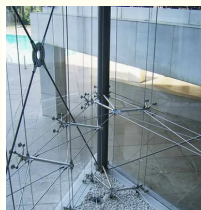


### Product Specification

- Aluminium Color: Customizable Color
- Durability: Long-lasting
- Function: Soundproof ,Adjust The Light
- Advantage: Waterproof, Soundproof, Energy Saving
- Aesthetics: Sleek And Modern
- Panel Thickness: 1.4~3.0mm
- Heat Insulation: Yes
- Protection: Thermal Insulation
- Highlight: **High Durability Modern Glass Curtain Wall, Aesthetics Modern Glass Curtain Wall, Modern Glass Curtain Wall**



### More Images



### Product Description

#### Senior Customized Various Dustproof Stick Curtain Wall Facade

##### Product Attributes

Attribute	Value
Aluminium Color	Customizable Color
Durability	Long-lasting
Function	Soundproof, Adjust The Light
Advantage	Waterproof, Soundproof, Energy Saving
Aesthetics	Sleek And Modern
Panel Thickness	1.4~3.0mm
Heat Insulation	Yes
Protection	Thermal Insulation

Our Product Introduction

## Product Overview

The Glass Curtain Wall is a revolutionary architectural element combining functionality with sleek, modern aesthetics. Designed to enhance building visual appeal, it offers a seamless contemporary look with customizable design options.

### Key Features

- Aesthetics:** Sleek and modern design
- Panel Thickness:** 1.4~3.0mm
- Durability:** Long-lasting performance
- Heat Insulation:** Yes
- Advantages:** Waterproof, Soundproof, Energy Saving

### Technical Specifications

- Brand Name:** GuangdongSuperHuge
- Model Number:** MQ
- Place of Origin:** China
- Certification:** CE, ISO
- Minimum Order Quantity:** 100m<sup>2</sup>
- Price:** 580RMB
- Packaging Details:** Wooden Box
- Delivery Time:** 20-60 work days
- Payment Terms:** T/T

### Applications

Ideal for various architectural applications including:

- Commercial Buildings:** Enhances sophistication while providing thermal insulation and soundproofing
- Residential Complexes:** Allows natural light with customizable color options and energy efficiency
- Hotels and Resorts:** Provides scenic views with soundproofing and adjustable light control

### Customization Options

- Patterns Selection:** Customized design available
- Aluminium Color:** Customizable color options
- Panel Thickness:** 1.4~3.0mm range



+8618819437088 windowsjs8@gmail.com glass-curtainwall.com

Shop 106, Building 5, Greenland Shangpin Garden, No. 6, East Extension Line of Fochan Road, Nanchong Community, Chencun Town, Shunde District, Foshan City, Guangdong Province