

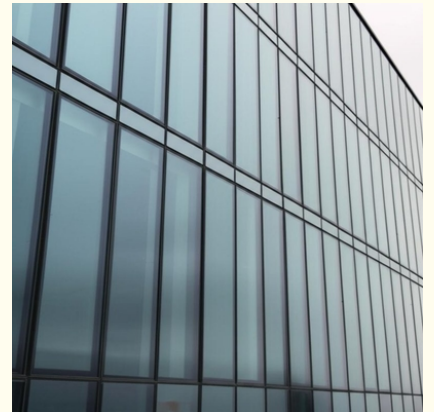
## Customized Design Glass Curtain Wall with Sleek And Modern Aesthetics and Heat Insulation

### Our Product Introduction

for more products please visit us on [glass-curtainwall.com](http://glass-curtainwall.com)

#### Basic Information

- Place of Origin: China
- Brand Name: GuangdongSuperHuge
- Certification: CE,ISO
- Model Number: MQ
- Minimum Order Quantity: 100m<sup>2</sup>
- Price: 580RMB
- Packaging Details: Wooden Box
- Delivery Time: 20-60work days
- Payment Terms: T/T



#### Product Specification

- Protection: Thermal Insulation
- Aluminium Color: Customizable Color
- Advantage: Waterproof, Soundproof, Energy Saving
- Heat Insulation: Yes
- Panel Thickness: 1.4~3.0mm
- Aesthetics: Sleek And Modern
- Durability: Long-lasting
- Function: Soundproof ,Adjust The Light
- Highlight: **customized glass curtain wall,  
modern glass curtain wall design,  
heat insulation glass curtain wall**

Product Description:

The Glass Curtain Wall is a modern architectural solution that combines functionality with aesthetic appeal. It is designed to provide heat insulation, making it an energy-efficient choice for buildings. The Glass Curtain Wall is a versatile product that offers numerous advantages, including being waterproof, soundproof, and energy-saving.

One of the key features of the Glass Curtain Wall is its thermal insulation properties, which help regulate the temperature inside the building, creating a comfortable indoor environment all year round. This makes it an ideal choice for buildings in both hot and cold climates, as it helps reduce heating and cooling costs.

In addition to its heat insulation capabilities, the Glass Curtain Wall offers excellent protection against external elements, ensuring the longevity of the building structure. Its durable design makes it a long-lasting solution that requires minimal maintenance over time, saving both time and money for building owners.

Another advantage of the Glass Curtain Wall is its soundproofing properties, which help create a peaceful and quiet indoor environment. This is particularly beneficial for buildings located in busy urban areas or near noisy environments, providing occupants with a comfortable and productive space.

Furthermore, the Glass Curtain Wall is designed to adjust the light entering the building, allowing for natural light to illuminate the interior spaces. This not only enhances the visual appeal of the building but also reduces the need for artificial lighting, contributing to energy savings and creating a more sustainable environment.

In conclusion, the Glass Curtain Wall is a versatile and efficient architectural product that offers a range of benefits, including heat insulation, waterproofing, soundproofing, energy savings, thermal insulation, and durability. Its ability to adjust the light and create a comfortable indoor environment makes it an ideal choice for modern buildings seeking a combination of functionality and aesthetics.

Features:

Product Name: Glass Curtain Wall

Patterns Selection: Customized Design Available

Advantage: Waterproof, Soundproof, Energy Saving

Panel Thickness: 1.4~3.0mm

Durability: Long-lasting

Aesthetics: Sleek And Modern

Technical Parameters:

Heat Insulation	Yes
Protection	Thermal Insulation
Durability	Long-lasting
Function	Soundproof, Adjust The Light
Patterns Selection	Customized Design Available
Advantage	Waterproof, Soundproof, Energy Saving
Aluminium Color	Customizable Color
Aesthetics	Sleek And Modern
Panel Thickness	1.4~3.0mm

Applications:

When it comes to versatile and modern architectural solutions, the Glass Curtain Wall from GuangdongSuperHuge is a top choice. With model number MQ and originating from China, this product is certified with CE and ISO standards, ensuring quality and reliability.

The Glass Curtain Wall is ideal for a variety of application occasions and scenarios, making it a popular choice for commercial and residential buildings alike. Its sleek and modern aesthetics add a touch of elegance to any space, while offering thermal insulation for protection against external elements.

One of the key features of the Glass Curtain Wall is its ability to provide soundproofing properties, creating a peaceful and quiet environment within the building. Additionally, the adjustable light function allows for the control of natural light intake, creating a comfortable and well-lit space.

Customizable patterns selection is available for the Glass Curtain Wall, allowing for a unique and personalized design that suits the specific needs and preferences of the customer. The aluminum color is also customizable, ensuring that the product seamlessly integrates with the overall design scheme.

With a minimum order quantity of 100m² and a price of 580RMB, the Glass Curtain Wall is a cost-effective solution for enhancing the aesthetics and functionality of any building. The packaging details include a sturdy wooden box for safe transportation, and the delivery time ranges from 20 to 60 work days.

Payment terms for the Glass Curtain Wall are flexible, with options for T/T payments. Whether it's for a new construction project or a renovation, the Glass Curtain Wall from GuangdongSuperHuge is a reliable and stylish choice for creating a modern and efficient building facade.



**Guangdong SuperHuge Doors and Windows Co., Ltd**



+8618819437088



windowsjs8@gmail.com



glass-curtainwall.com

Shop 106, Building 5, Greenland Shangpin Garden, No. 6, East Extension Line of Fochan Road, Nanchong  
Community, Chencun Town, Shunde District, Foshan City, Guangdong Province