

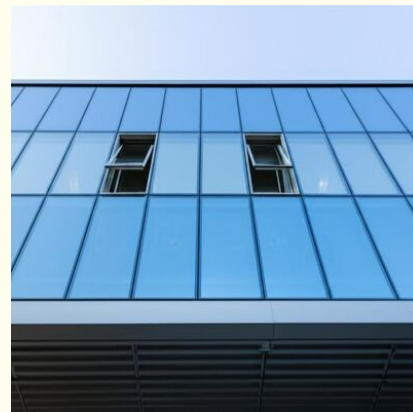
## Customizable Color Glass Curtain Wall Waterproof Design Element Offering Sleek Modern Appearance for Commercial Buildings

### Our Product Introduction

for more products please visit us on [glass-curtainwall.com](http://glass-curtainwall.com)

#### Basic Information

- Place of Origin: China
- Brand Name: GuangdongSuperHuge
- Certification: CE,ISO
- Model Number: MQ
- Minimum Order Quantity: 100m<sup>2</sup>
- Price: 580RMB
- Packaging Details: Wooden Box
- Delivery Time: 20-60work days
- Payment Terms: T/T



#### Product Specification

- Aluminium Color: Customizable Color
- Function: Soundproof ,Adjust The Light
- Protection: Thermal Insulation
- Patterns Selection: Customized Design Available
- Advantage: Waterproof, Soundproof, Energy Saving
- Aesthetics: Sleek And Modern
- Durability: Long-lasting
- Panel Thickness: 1.4~3.0mm
- Highlight: customizable glass curtain wall,  
waterproof glass curtain design,  
modern commercial building glass wall

Product Description:

The Glass Curtain Wall is an innovative architectural solution designed to enhance the exterior façade of modern buildings while providing exceptional functional benefits. Combining advanced materials with cutting-edge engineering, the Glass Curtain Wall offers a seamless blend of aesthetics and performance, making it a preferred choice for architects and builders worldwide. This product is designed to meet the highest standards of durability, energy efficiency, and sound insulation, ensuring a comfortable and stylish environment inside any structure.

One of the primary advantages of the Glass Curtain Wall is its superior waterproof capability. Constructed with precision-engineered seals and high-quality glass panels, it effectively prevents water infiltration even under extreme weather conditions. This waterproof feature protects the building's interior from moisture damage, thereby extending the lifespan of the structure and reducing maintenance costs. Alongside its waterproof properties, the Glass Curtain Wall also excels in soundproofing. The multi-layered glass panels and specialized framing system significantly minimize external noise, creating a quieter and more peaceful indoor environment. This makes it particularly suitable for buildings located in busy urban areas or near transportation hubs.

Energy saving is another critical attribute of the Glass Curtain Wall. Featuring high-performance insulating glass and thermally broken aluminum frames, it reduces heat transfer between the interior and exterior environments. This energy-efficient design helps maintain consistent indoor temperatures, lowering the demand for heating and cooling systems and ultimately reducing energy consumption and utility bills. The energy-saving capability of the Glass Curtain Wall aligns with sustainable building practices and contributes to green building certifications, making it an environmentally responsible choice.

The Glass Curtain Wall offers extensive customization options to cater to the unique needs of different architectural projects. Customers can choose from a wide range of patterns, allowing for personalized and creative design solutions. Whether a sleek minimalist look or an intricate decorative pattern is desired, the Glass Curtain Wall can be tailored to meet specific aesthetic preferences. This flexibility in pattern selection ensures that each installation enhances the visual appeal and character of the building, setting it apart from conventional façades.

In addition to design versatility, the aluminum components of the Glass Curtain Wall are available in customizable colors. This feature allows architects and designers to coordinate the curtain wall's appearance with the overall color scheme of the building or surrounding environment. The customizable aluminum color options include a variety of finishes such as matte, glossy, metallic, or textured, providing further design freedom and ensuring the curtain wall complements the architectural vision.

Durability is a cornerstone of the Glass Curtain Wall's construction. Built to withstand harsh environmental conditions including wind loads, temperature fluctuations, and UV exposure, the system maintains its structural integrity and appearance over time. The use of high-quality materials and precision manufacturing techniques guarantees long-lasting performance with minimal degradation. This durability not only ensures safety and reliability but also protects the investment by reducing the need for repairs or replacements.

From an aesthetic perspective, the Glass Curtain Wall offers a sleek and modern look that elevates the appearance of any building. Its smooth glass surfaces combined with streamlined aluminum framing create a contemporary façade that is both elegant and timeless. The transparency and reflective qualities of the glass add depth and light to the building's exterior, enhancing natural daylight penetration and creating a welcoming atmosphere. The sleek and modern design of the Glass Curtain Wall is ideal for commercial, residential, and institutional buildings aiming to achieve a sophisticated architectural statement.

In summary, the Glass Curtain Wall is a multifunctional building envelope solution that delivers waterproofing, soundproofing, and energy-saving benefits without compromising on design. With customizable patterns and aluminum color options, long-lasting durability, and a sleek modern aesthetic, it is an excellent choice for those seeking to combine performance with style. Whether for new construction or renovation projects, the Glass Curtain Wall provides a reliable, attractive, and efficient façade system that meets the demands of contemporary architecture.

Features:

- Glass Curtain Wall with long-lasting durability.
- Panel thickness ranges from 1.4 to 3.0mm for the Glass Curtain Wall
- Customized design available for patterns selection on the Glass Curtain Wall
- Functions include soundproofing and light adjustment
- Aluminium color is customizable to suit your preferences

Technical Parameters:

Protection	Thermal Insulation
Patterns Selection	Customized Design Available
Panel Thickness	1.4~3.0mm
Durability	Long-lasting
Aluminium Color	Customizable Color
Advantage	Waterproof, Soundproof, Energy Saving
Function	Soundproof, Adjust The Light
Aesthetics	Sleek And Modern

Applications:

The Glass Curtain Wall by GuangdongSuperHuge, model number MQ, is an innovative architectural solution originating from China,

designed to offer both aesthetic appeal and functional benefits. This product is widely applied in modern building projects where durability, design flexibility, and environmental efficiency are crucial. The Glass Curtain Wall is ideal for commercial complexes, office buildings, shopping malls, hotels, and high-rise residential towers, thanks to its customizable aluminum color and pattern selection which allows architects and designers to create unique facades tailored to specific project requirements.

One of the primary application occasions for the Glass Curtain Wall is in new construction and renovation projects aiming for energy efficiency and enhanced building performance. With a panel thickness ranging from 1.4 to 3.0mm, the Glass Curtain Wall offers excellent waterproof, soundproof, and thermal insulation properties. This makes it particularly suitable for urban environments where noise reduction and energy savings are highly valued. The product's CE and ISO certifications assure compliance with international quality and safety standards, making it a reliable choice for large-scale developments.

In scenarios where architectural aesthetics meet environmental considerations, the Glass Curtain Wall stands out as an ideal solution. Its customizable design options allow integration into various architectural styles, whether sleek and modern or more classic and intricate. The product's packaging in sturdy wooden boxes ensures safe delivery within 20 to 60 workdays, accommodating project timelines efficiently. With a minimum order quantity of 100m<sup>2</sup> and competitive pricing at 580 RMB per square meter, it is accessible for diverse project scales. Payment terms via T/T provide flexibility for procurement processes.

Moreover, the Glass Curtain Wall is perfect for projects requiring enhanced building envelope performance. Its energy-saving advantage contributes to reducing heating and cooling costs, while the waterproof and soundproof features improve occupant comfort and building longevity. Whether used in corporate headquarters, cultural centers, or luxury residential buildings, the GuangdongSuperHuge Glass Curtain Wall brings together innovation, customization, and sustainability to elevate architectural design and functionality.



**Guangdong SuperHuge Doors and Windows Co., Ltd**



+8618819437088



windowsjs8@gmail.com



glass-curtainwall.com

Shop 106, Building 5, Greenland Shangpin Garden, No. 6, East Extension Line of Focheng Road, Nanchong Community, Chencun Town, Shunde District, Foshan City, Guangdong Province